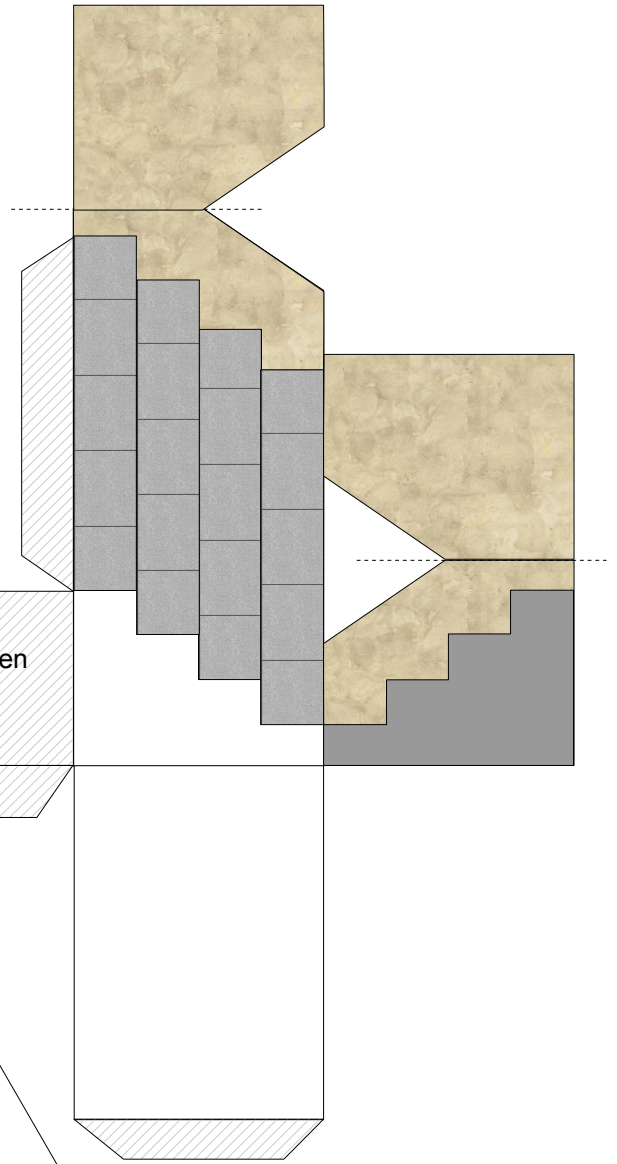
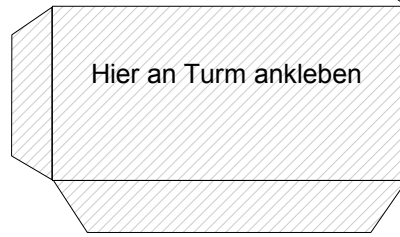
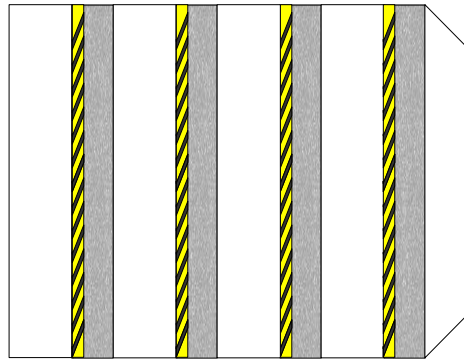
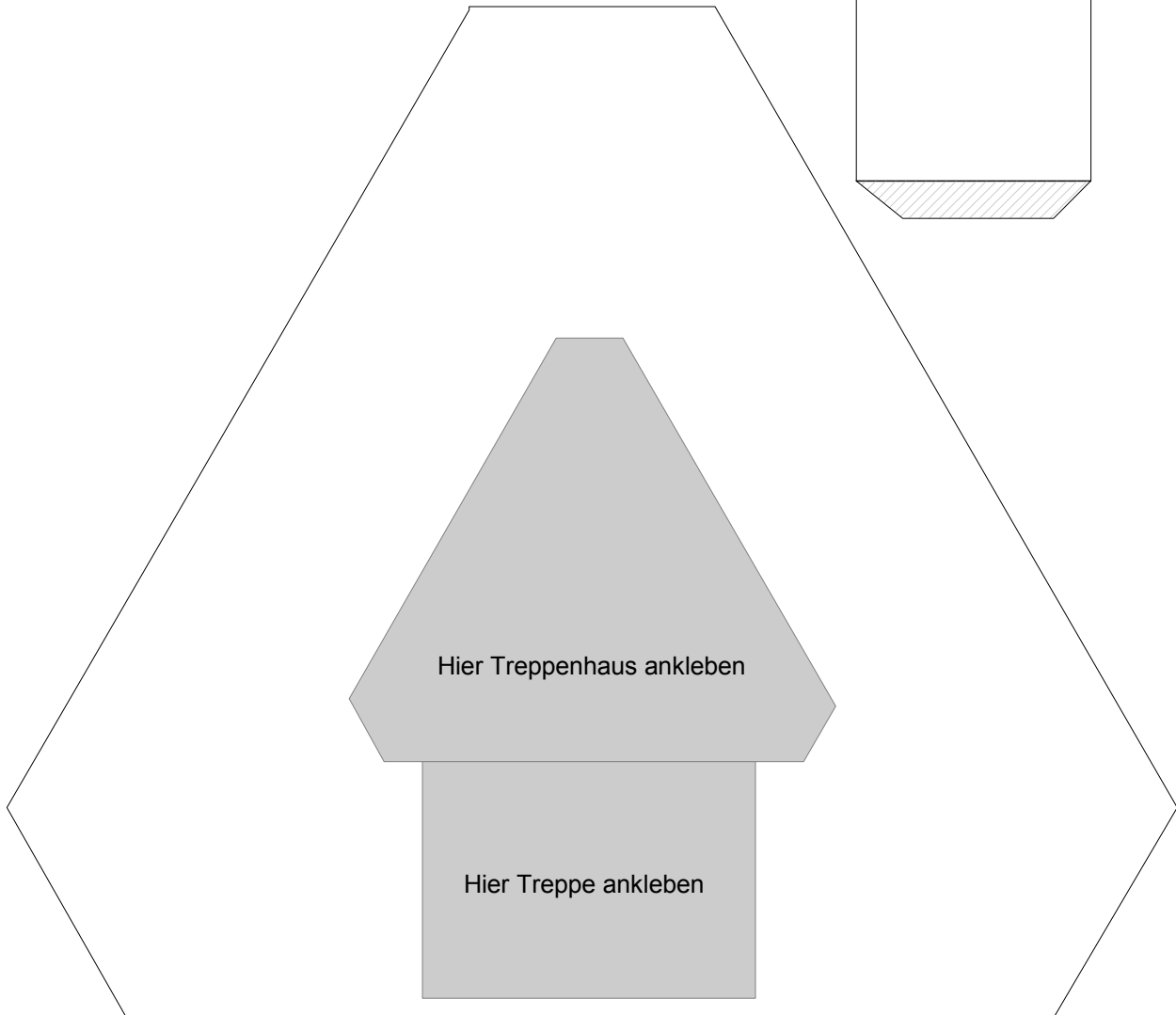


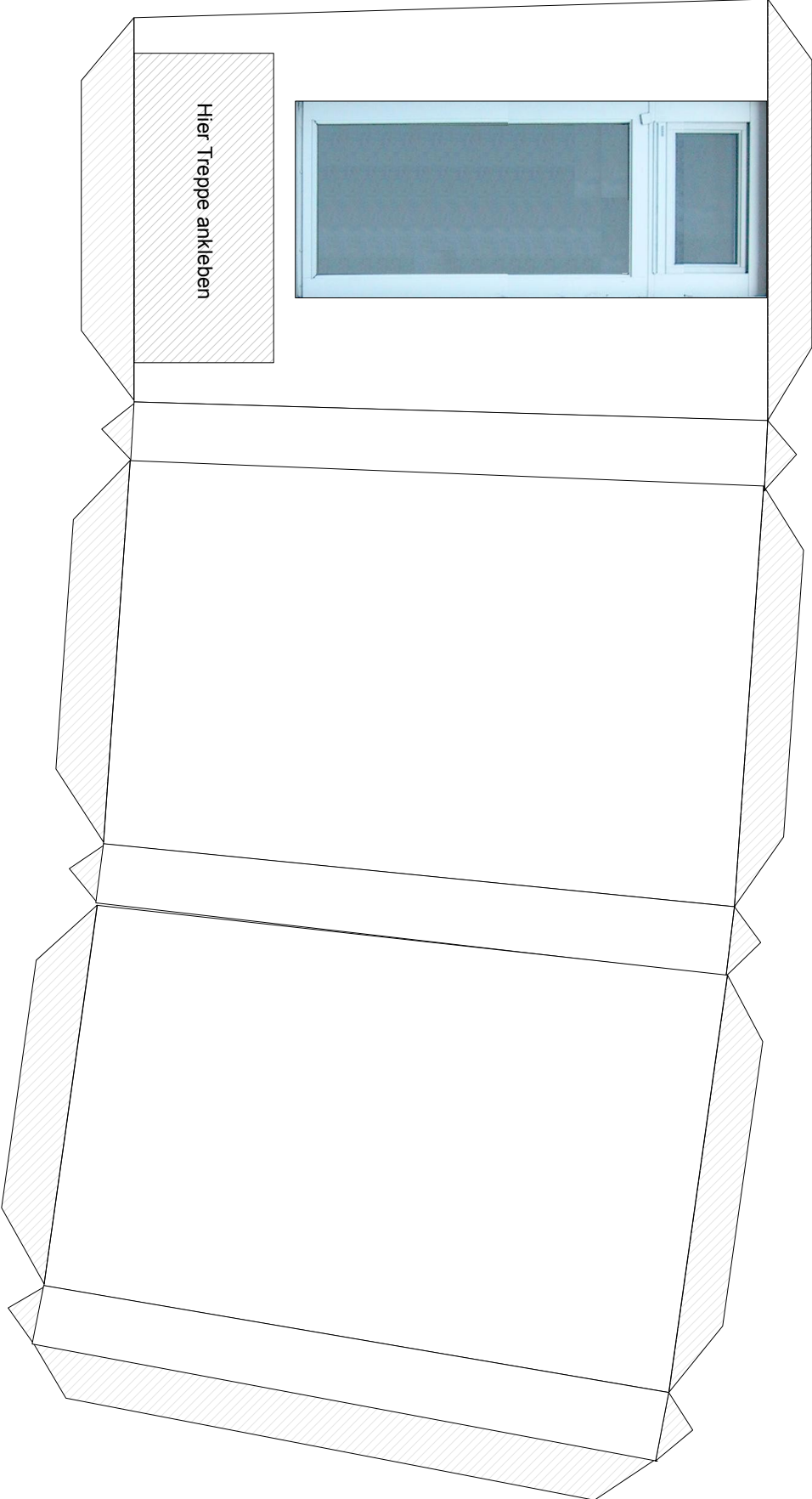
Blatt 1
Bodenplatte + Treppe

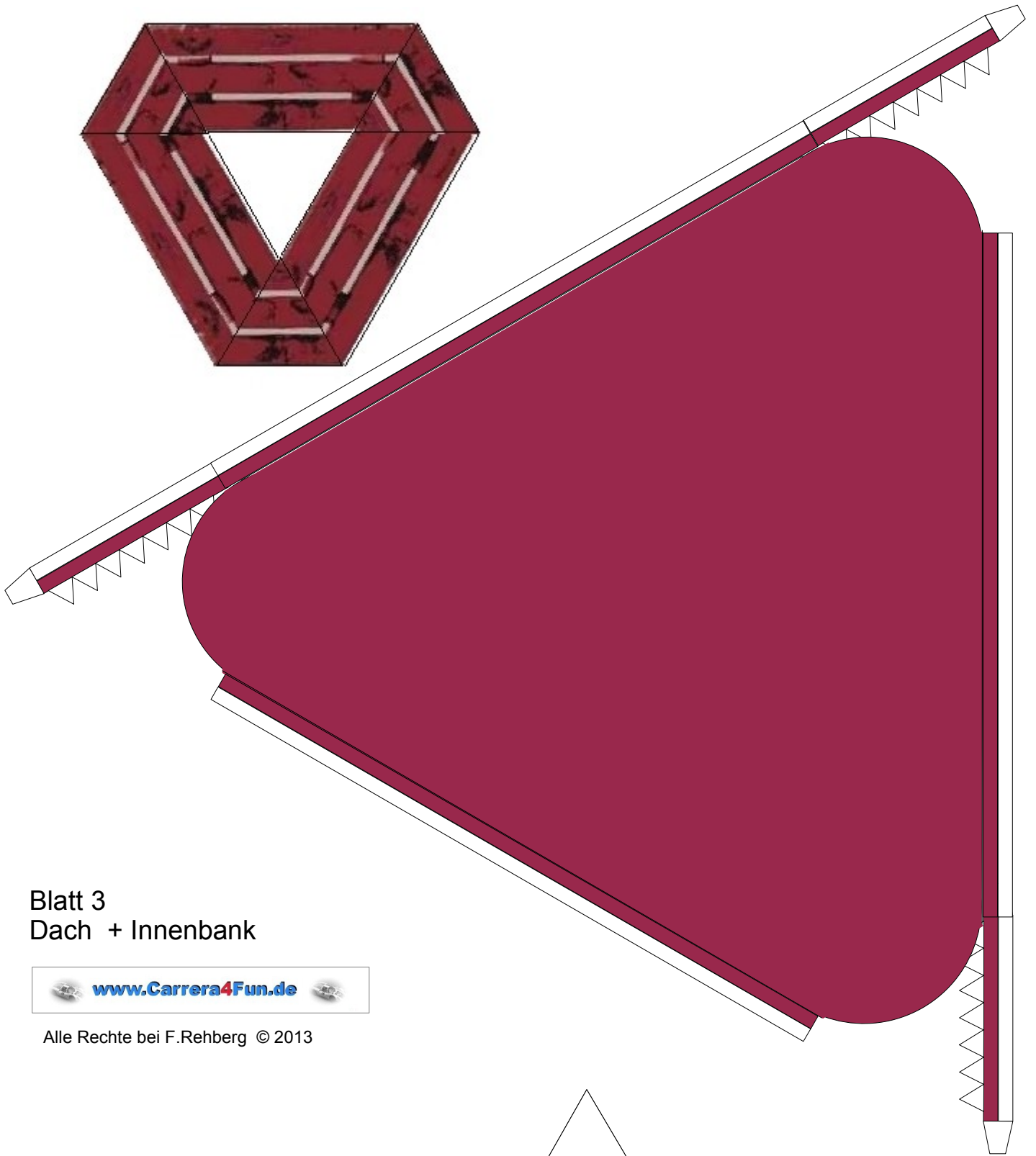


Alle Rechte bei F. Rehberg © 2013



Blatt 2
Treppenhaus

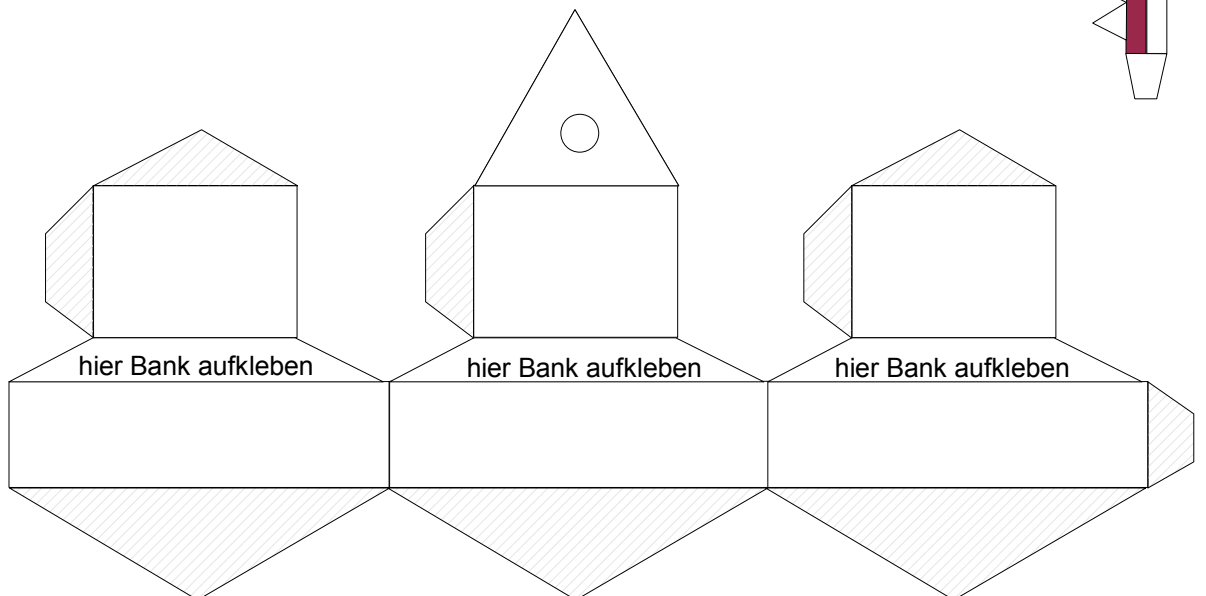


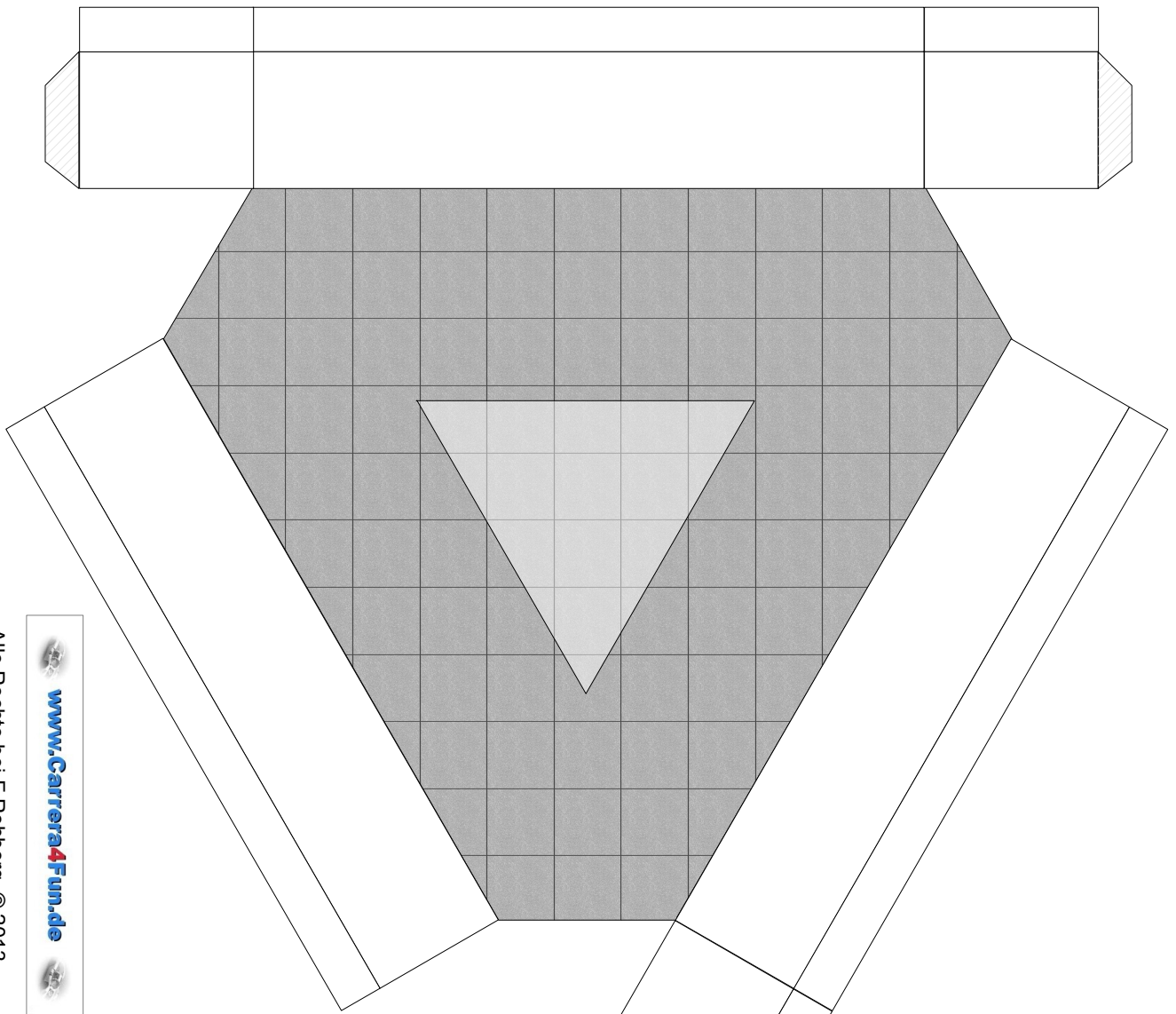


Blatt 3
Dach + Innenbank

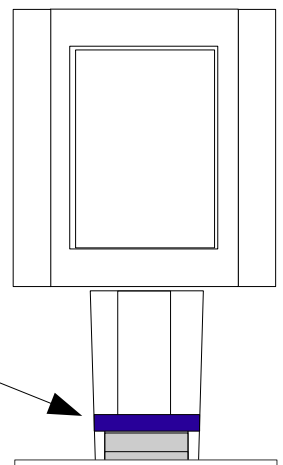
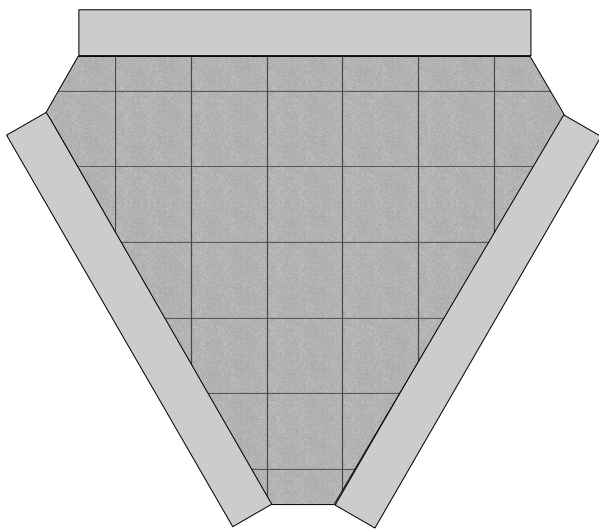
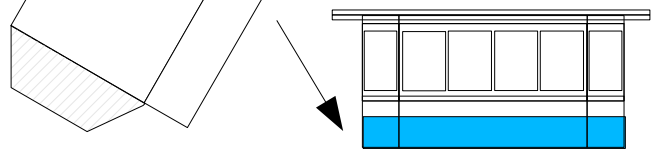


Alle Rechte bei F.Rehberg © 2013

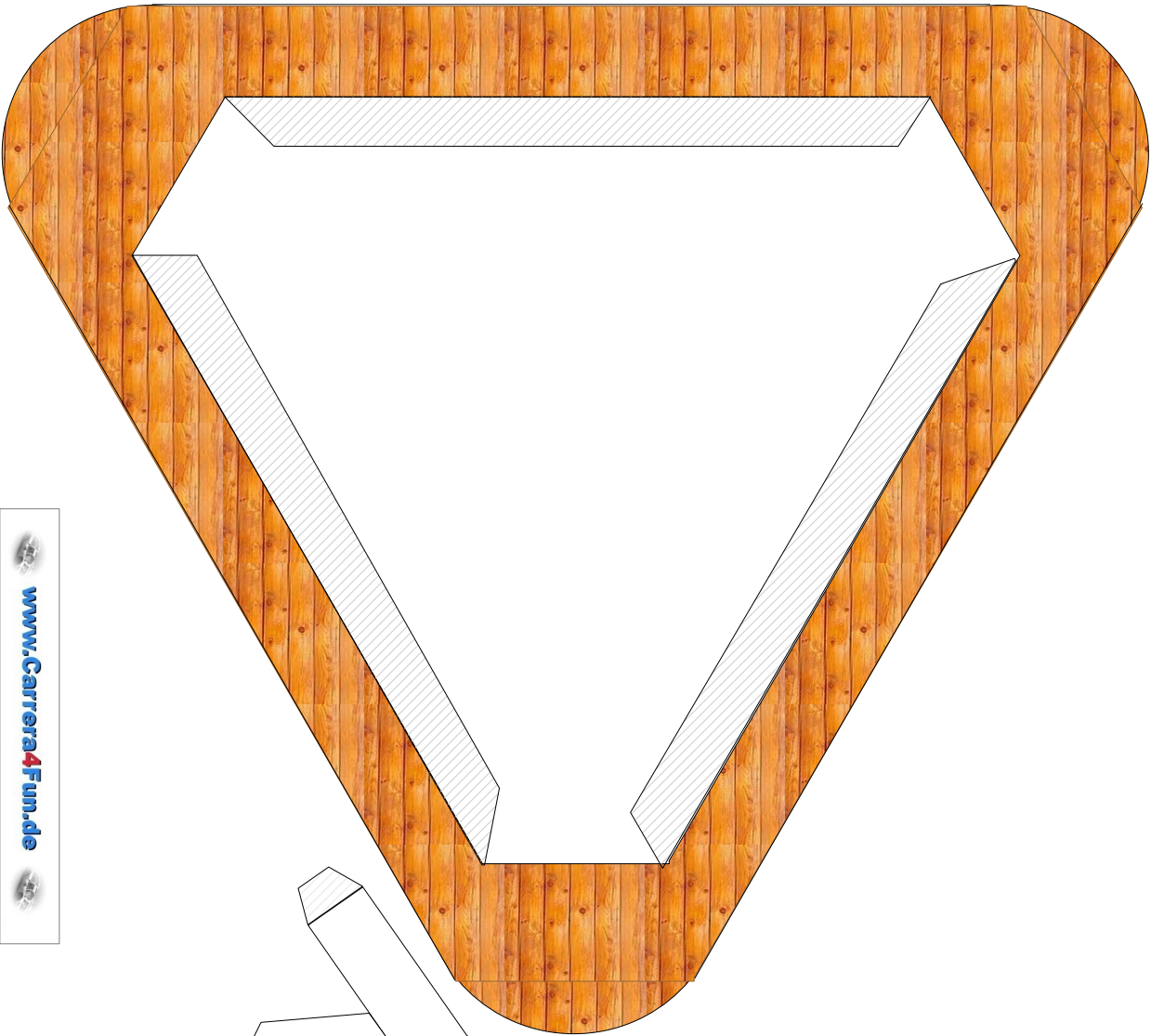




Alle Rechte bei F. Rehberg © 2013

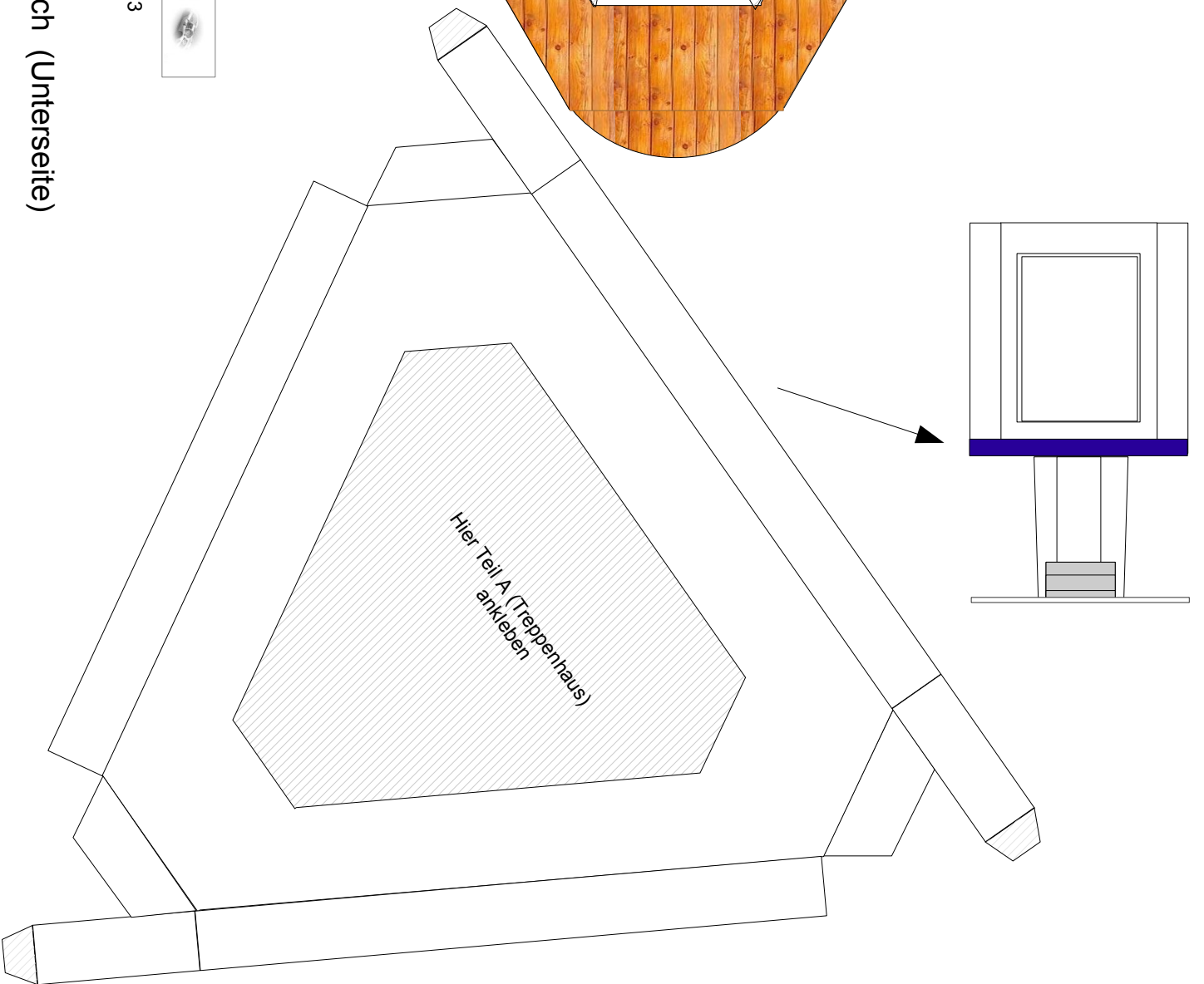


Blatt 4
Zwischendecken



Alle Rechte bei F. Rehberg © 2013

Blatt 5 Zwischenwand und Dach (Unterseite)



Teil C2

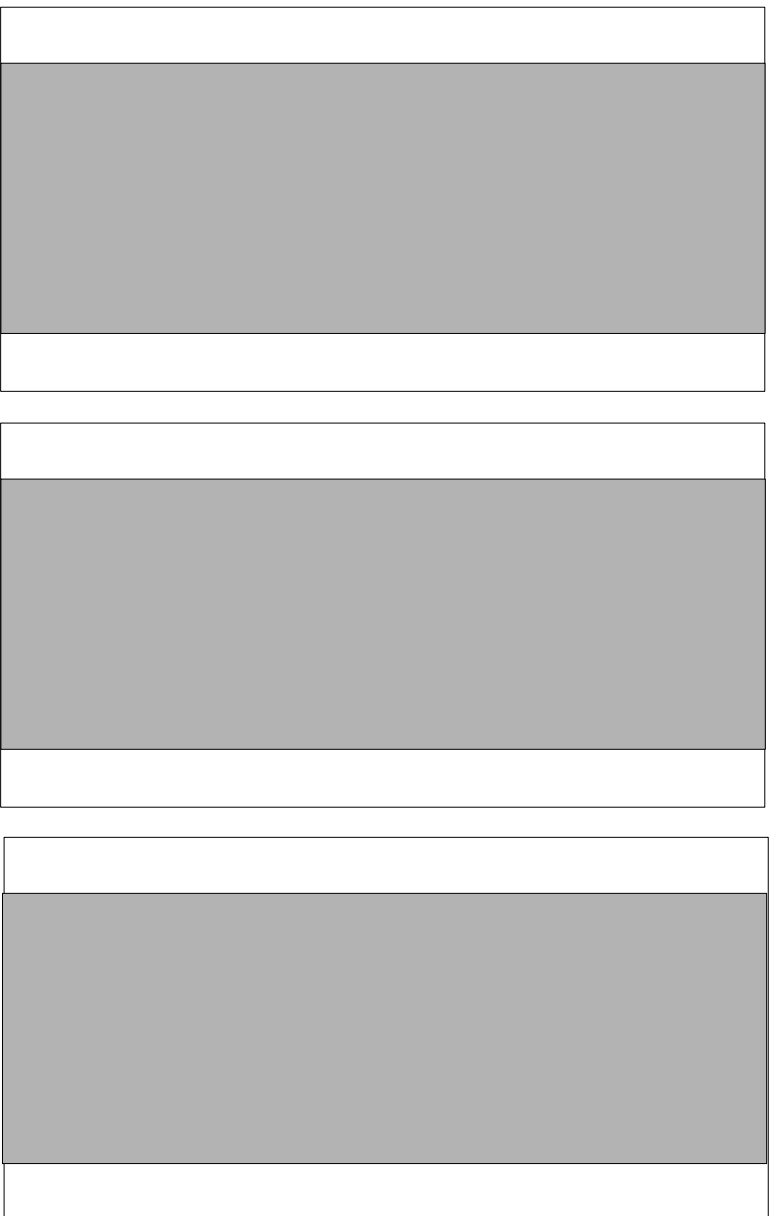
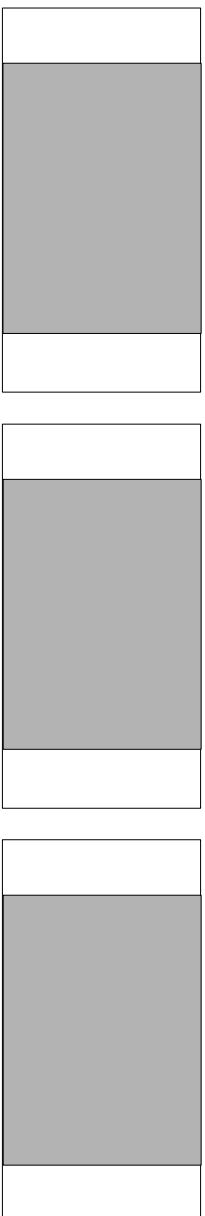
Hier Teil B2 aufkleben						Hier Teil B1 (Vorderseite) aufkleben			

Teil C1 (Vorderseite)

Teil C3

Hier Teil B3 aufkleben									

Blatt 7
Fensterfolien für Teil C1, C2 und C3





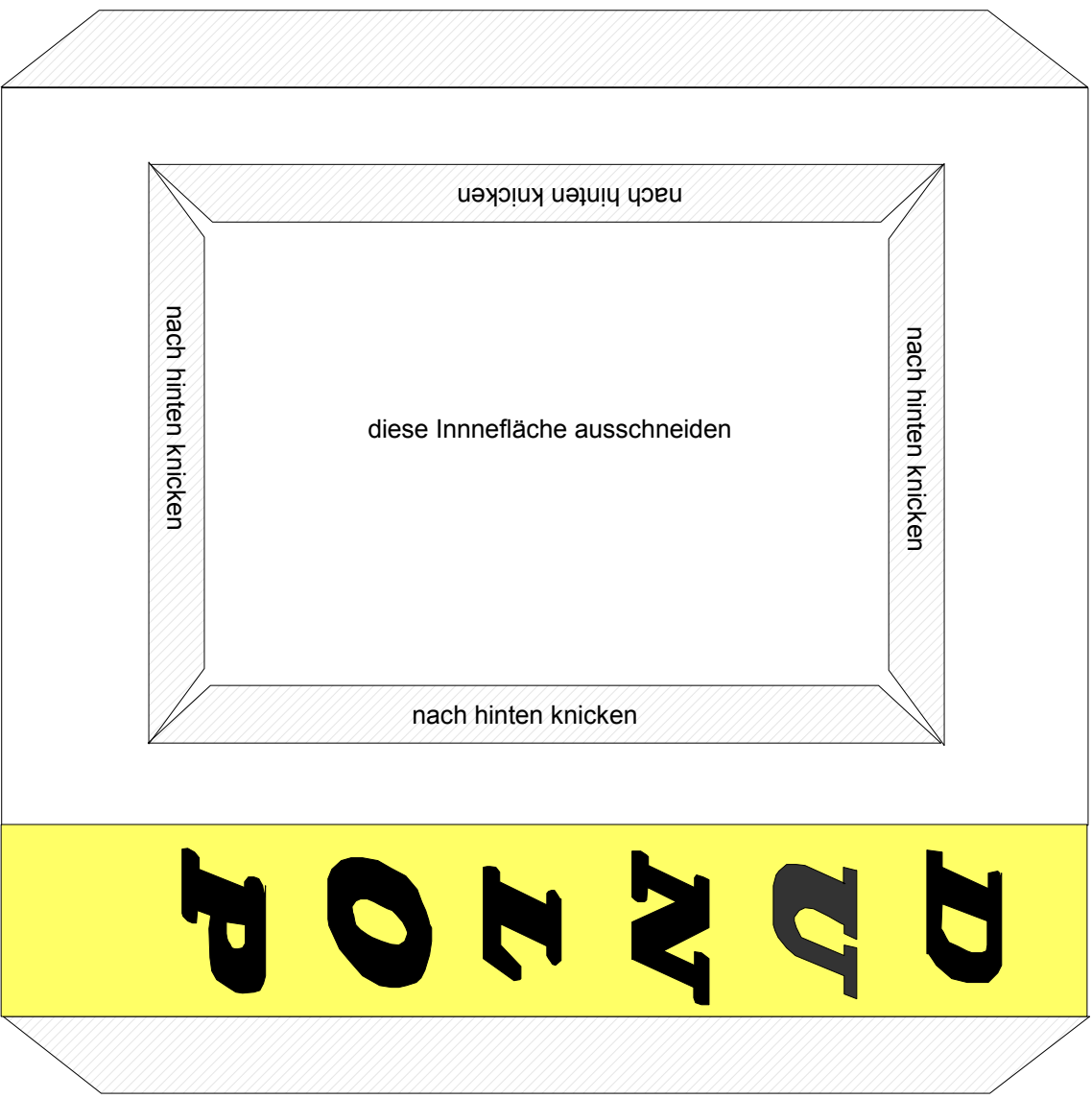
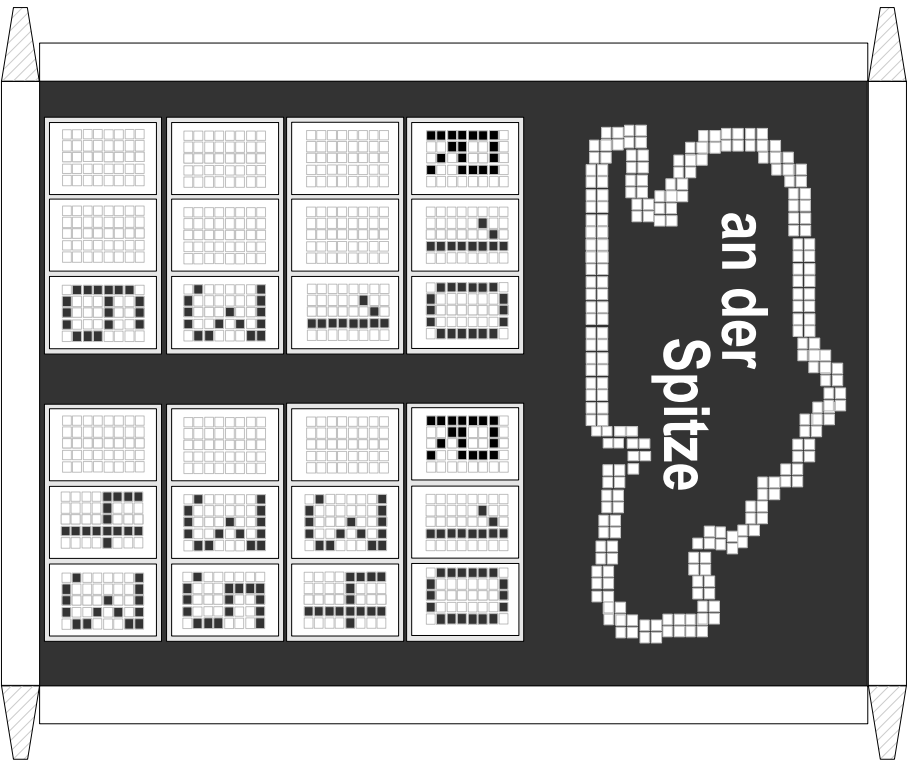
Teil B3

Blatt 8
Teil B2 und B3

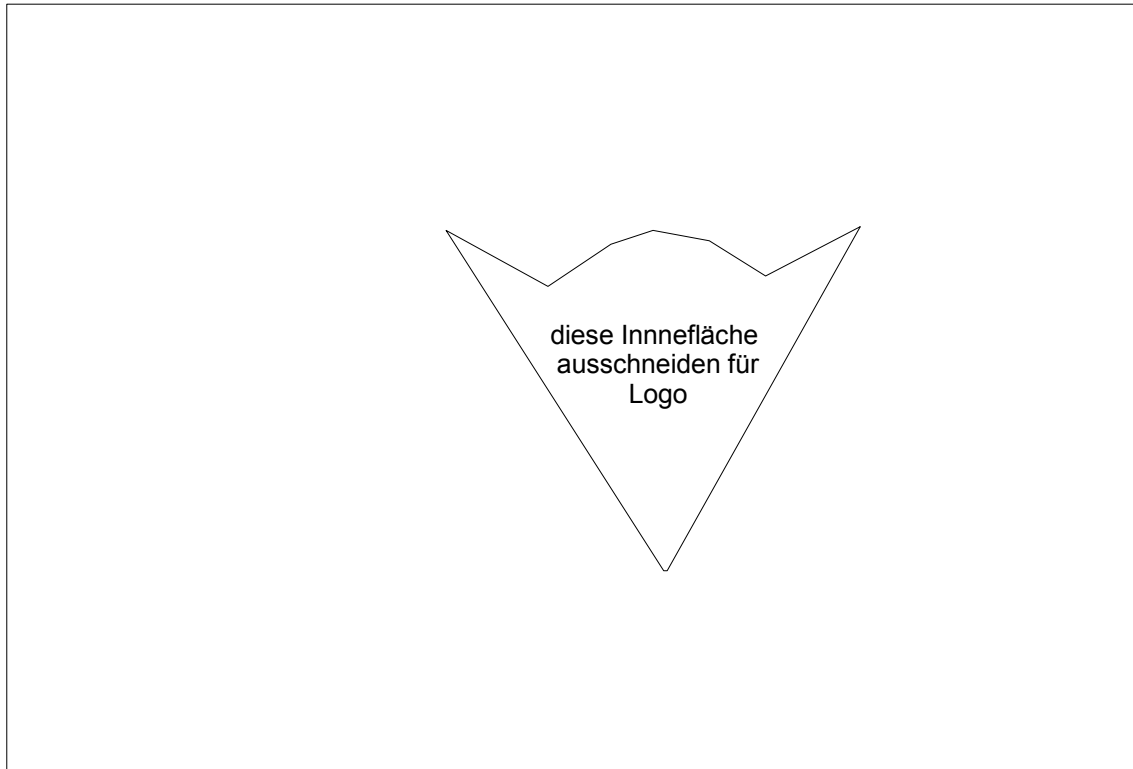
Teil B2

Alle Rechte bei F. Rehberg © 2013

	<p>D U N I O P</p>		<p>D U N I O P</p>
---	--	---	--



diesen Umriss 2 mal auf schwarzen Karton übertragen und ausschneiden
und dann auf Teil B2 und B3 aufkleben



diesen Umriss einmal auf schwarzen Karton übertragen und ausschneiden
und dann auf Teil B1 aufkleben

