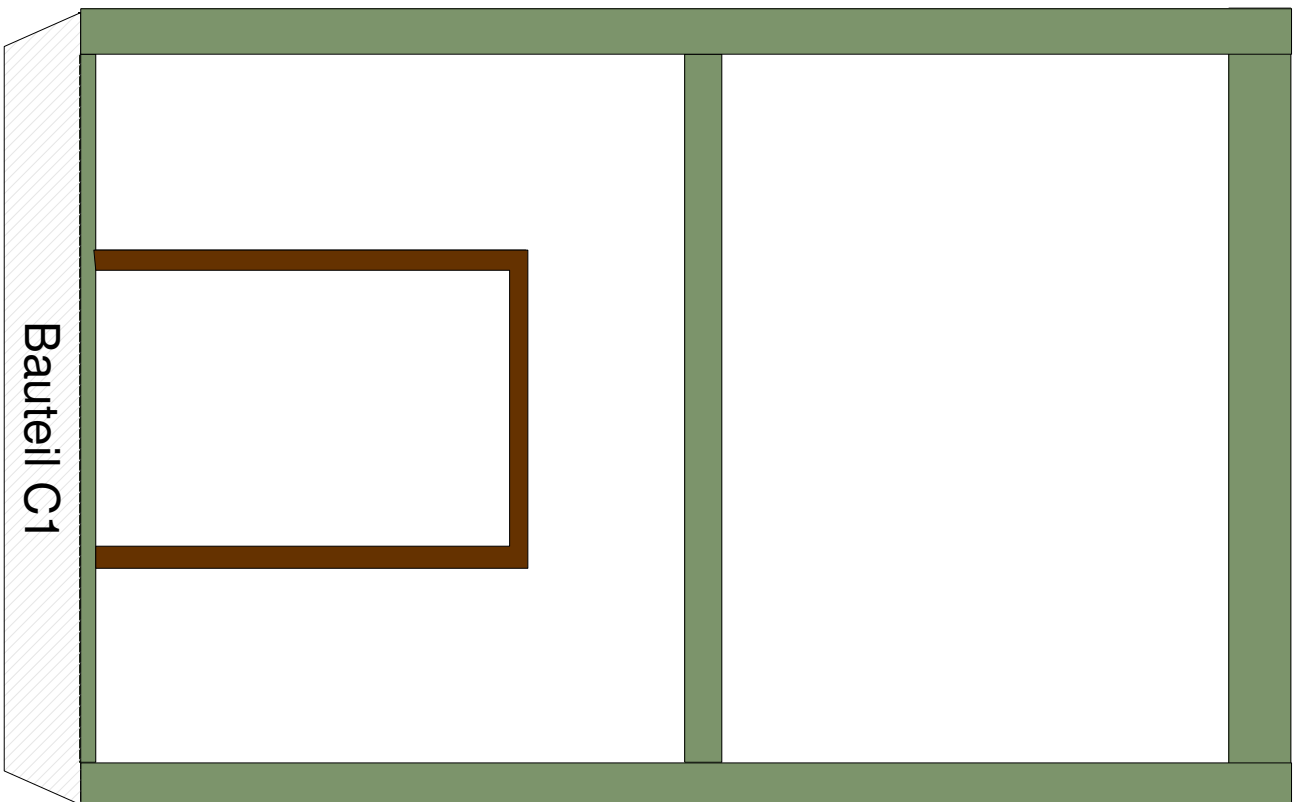
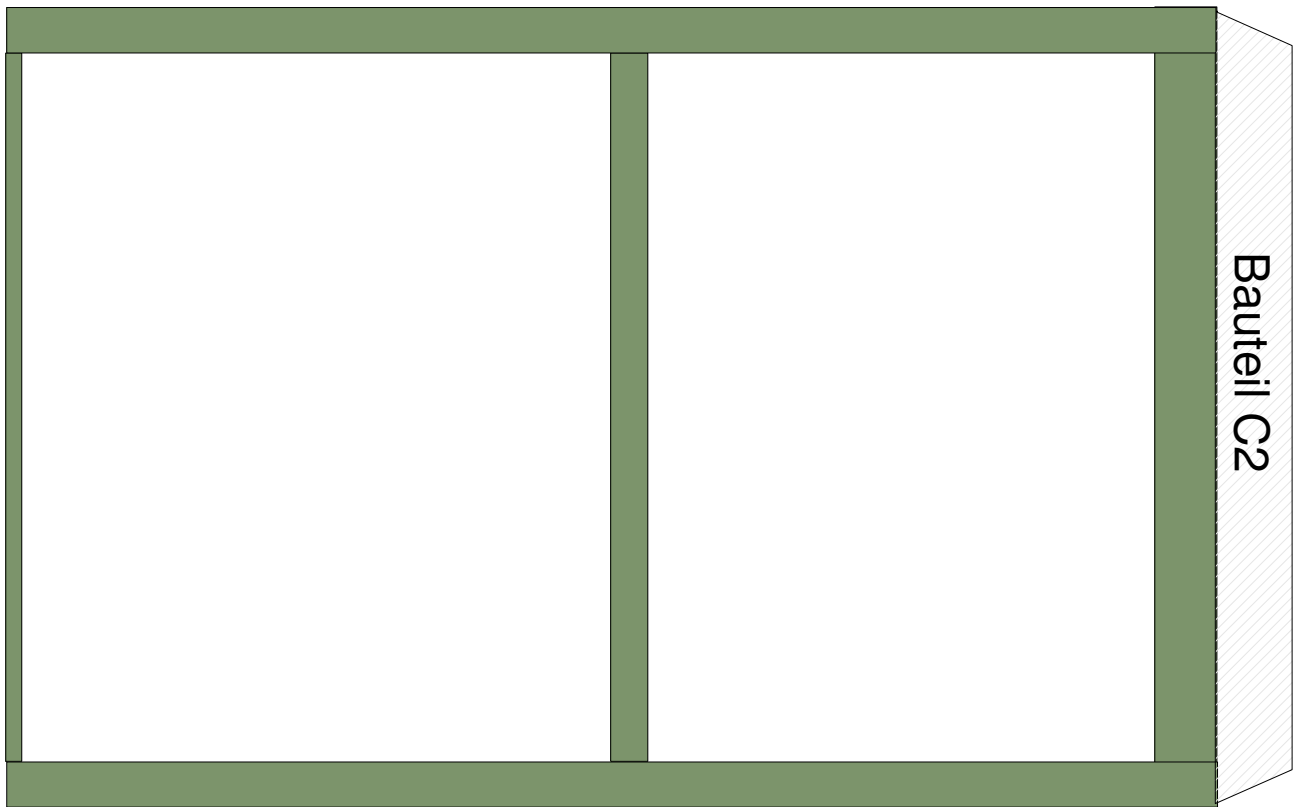
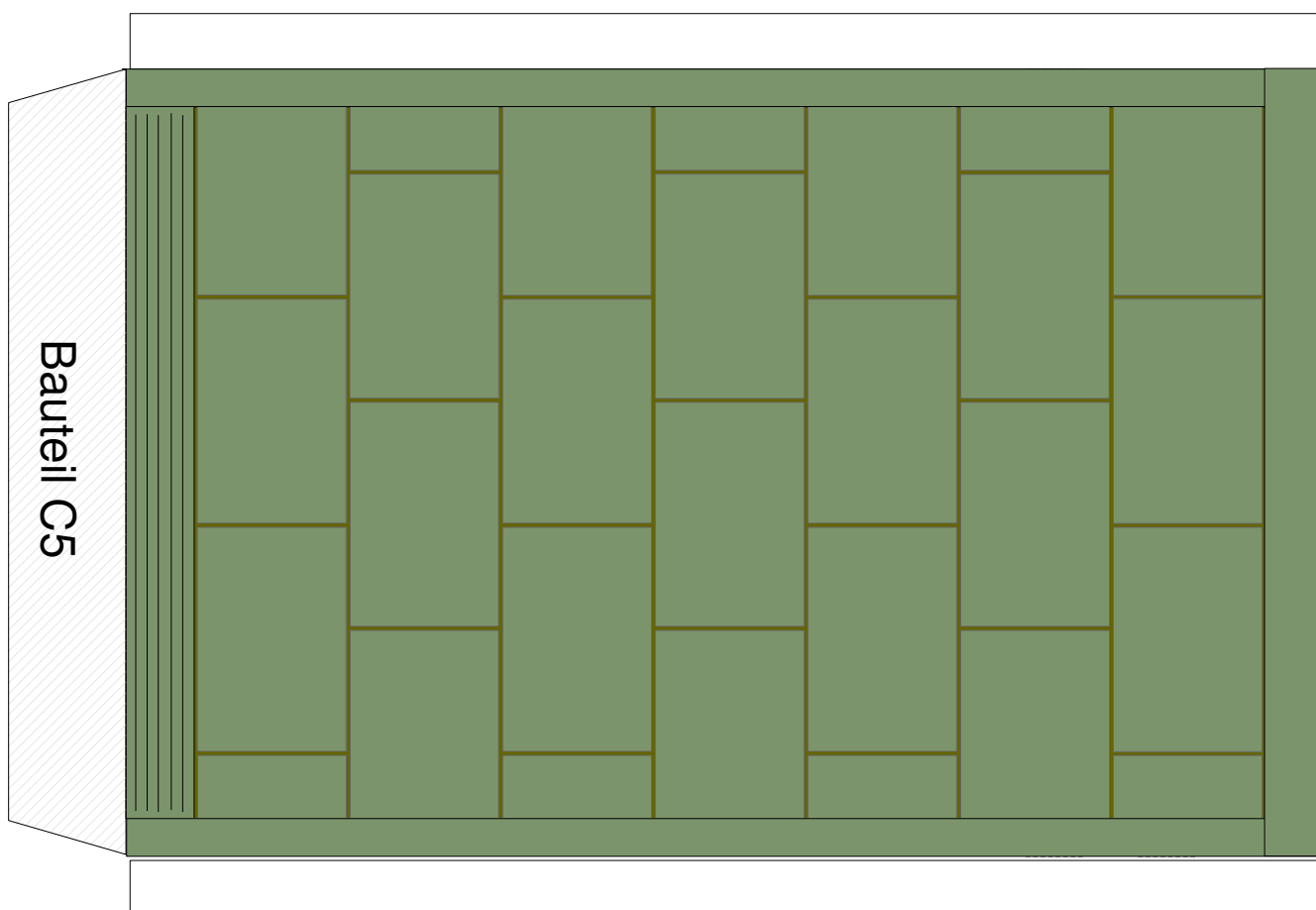
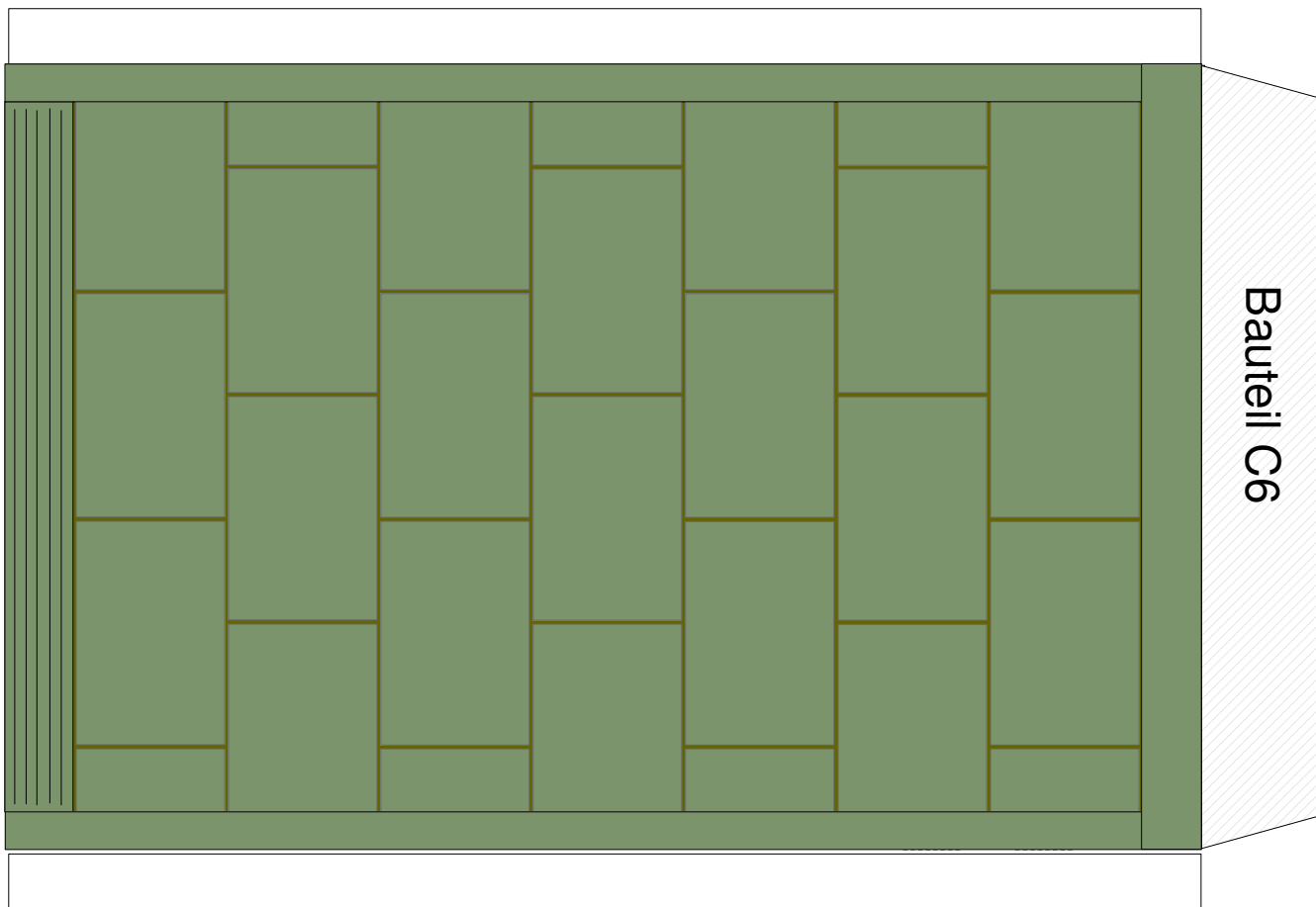


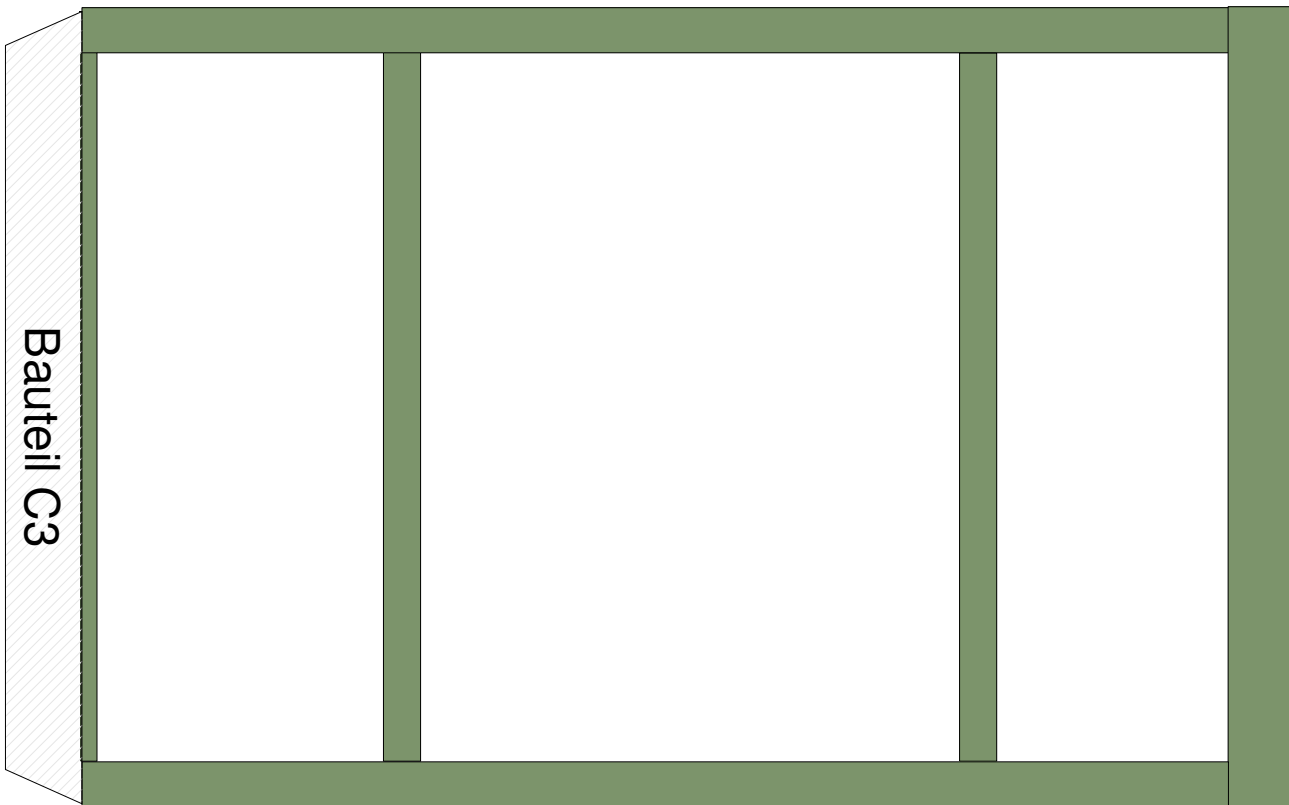
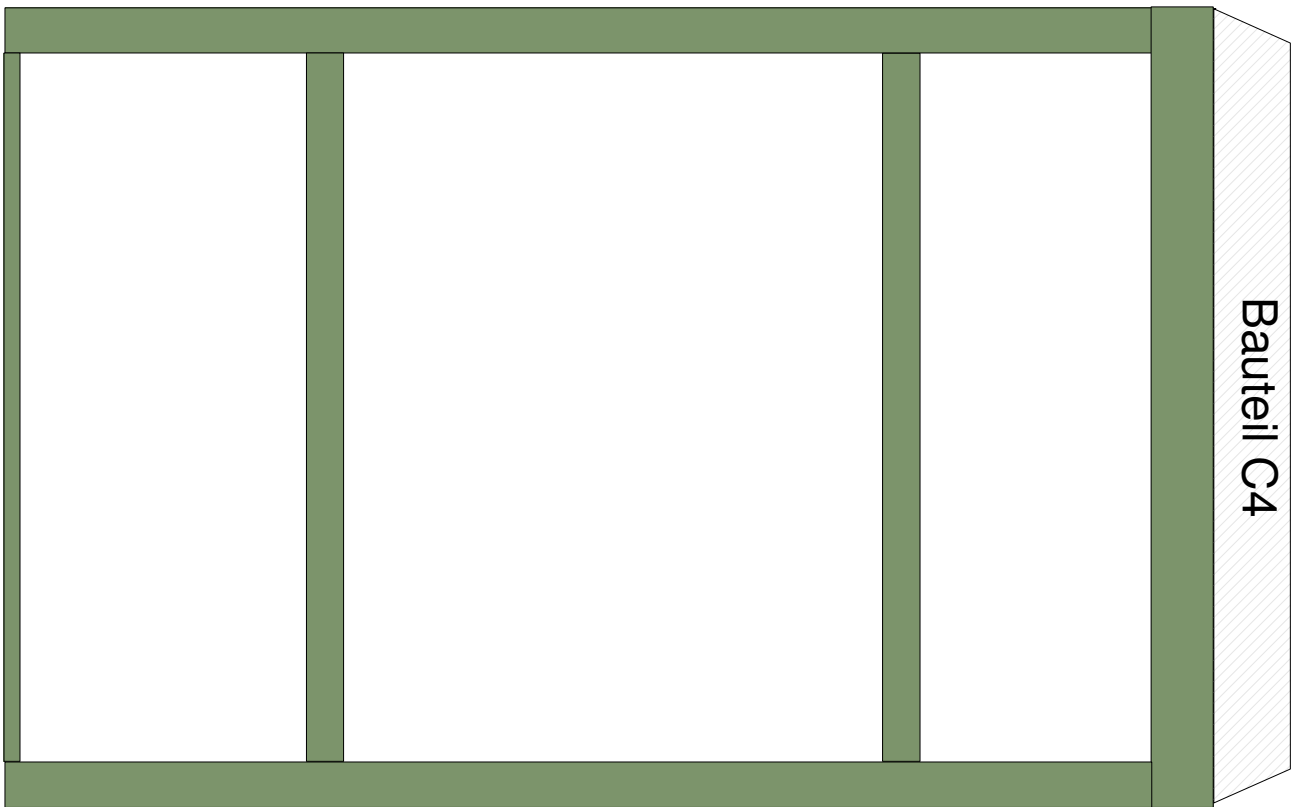
Dieses Blatt 1 mal ausdrucken ( Fensterwand Frontseite )

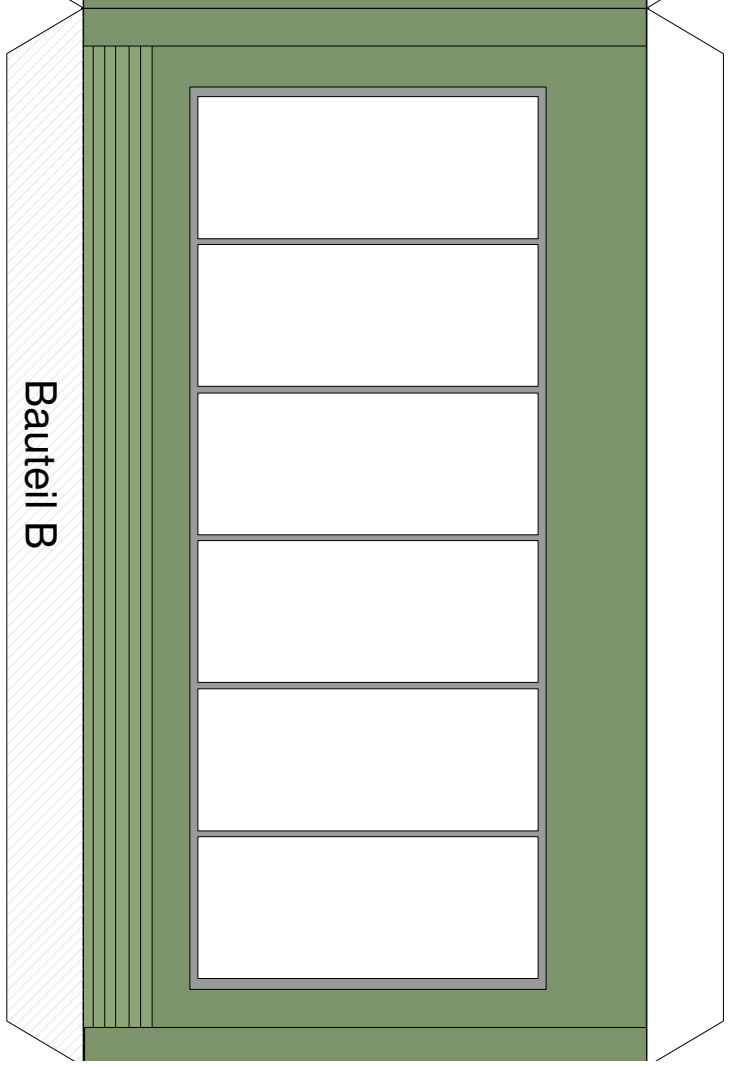
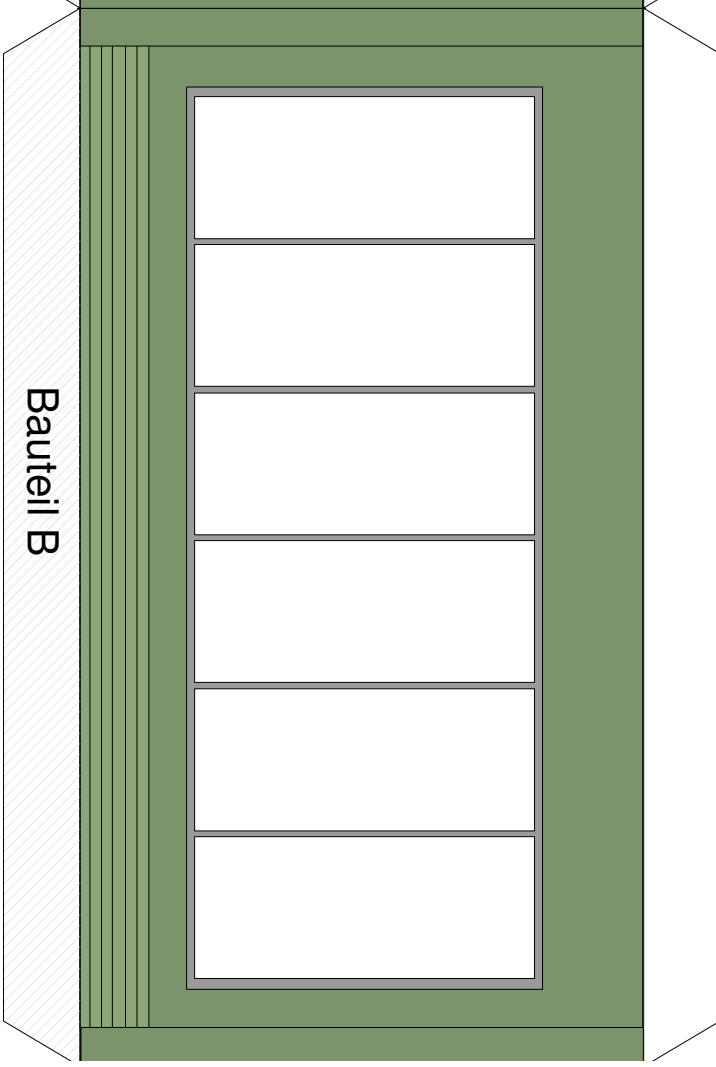
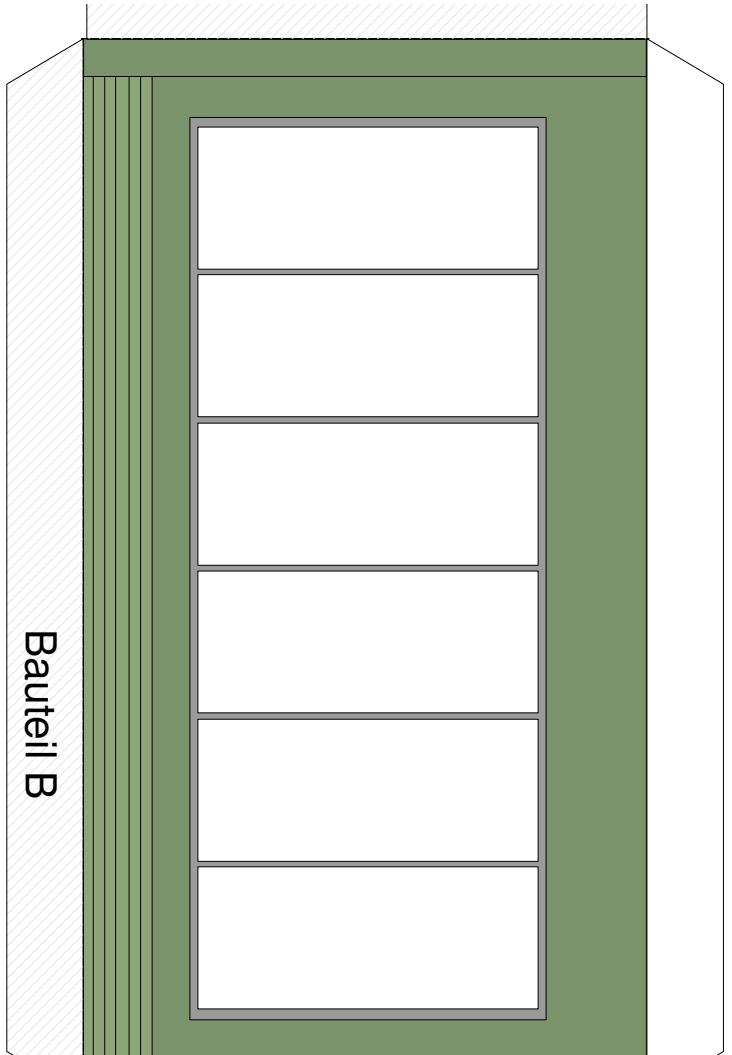
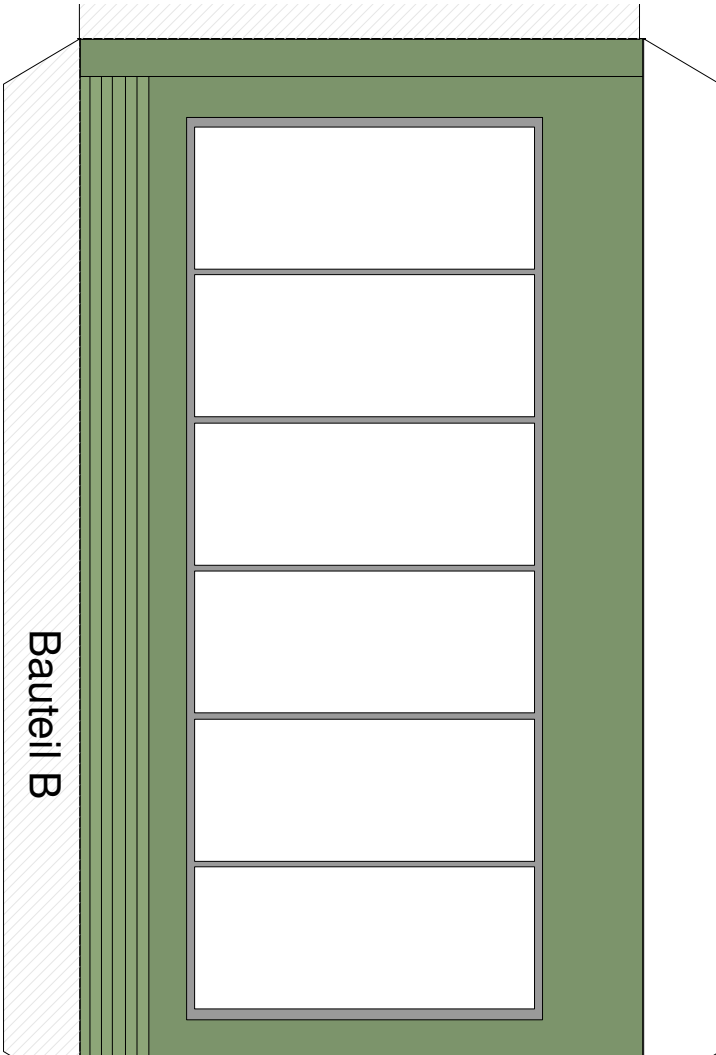


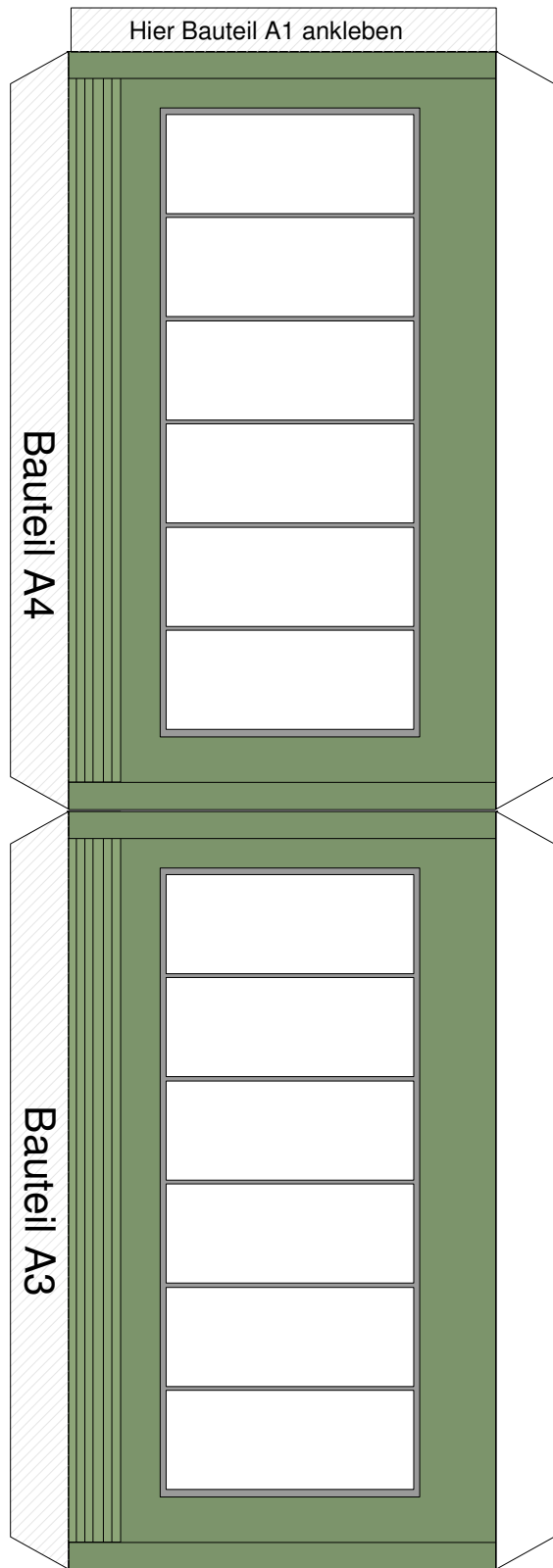
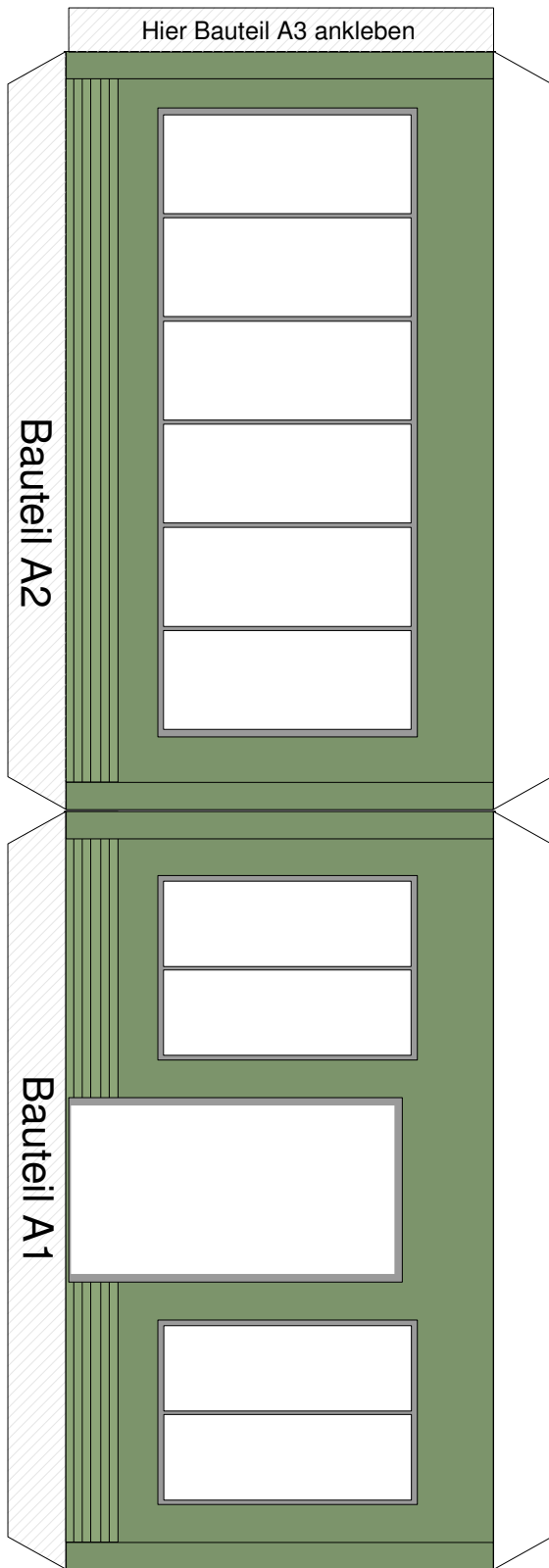
Dieses Blatt 2 mal ausdrucken (für Seitenwand links bzw. Seitenwand rechts)



Dieses Blatt 1 mal ausdrucken ( Fensterwand Rückseite)

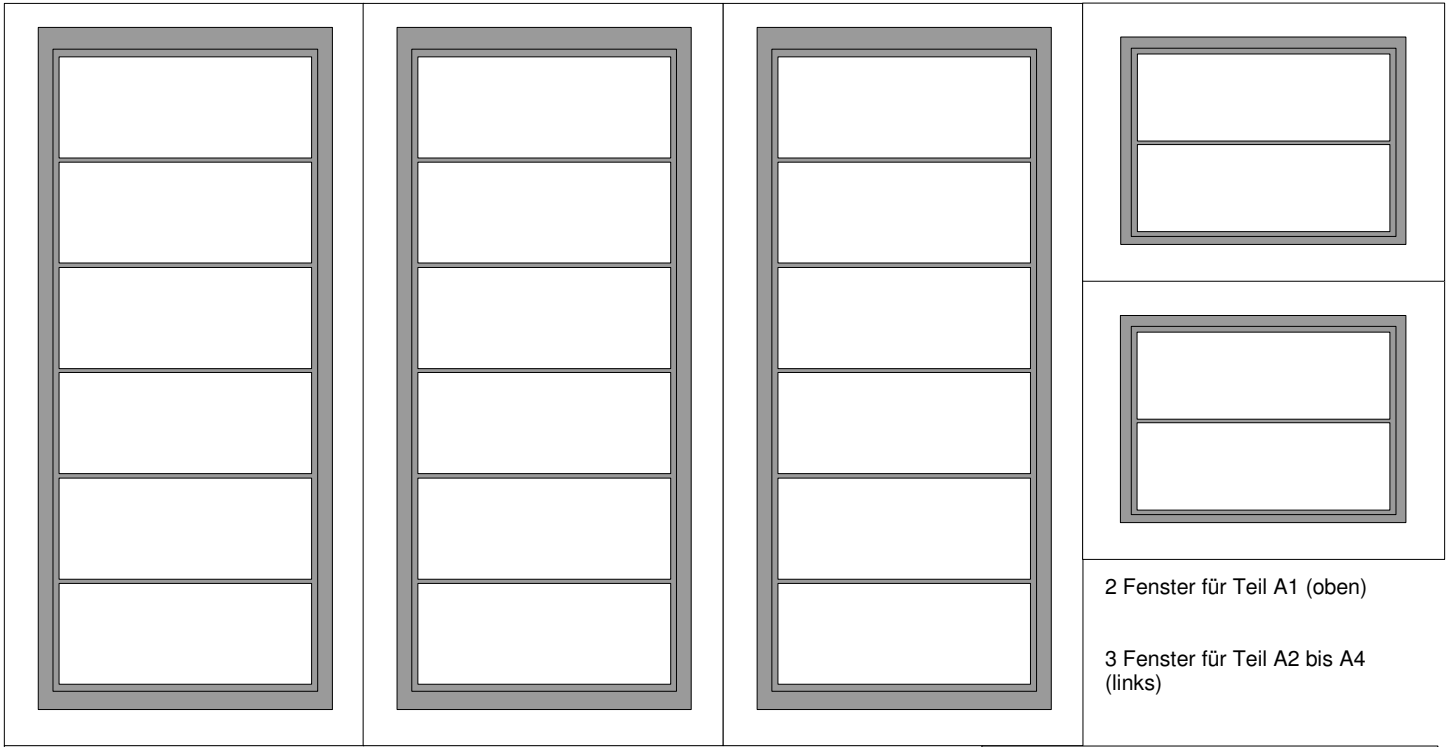






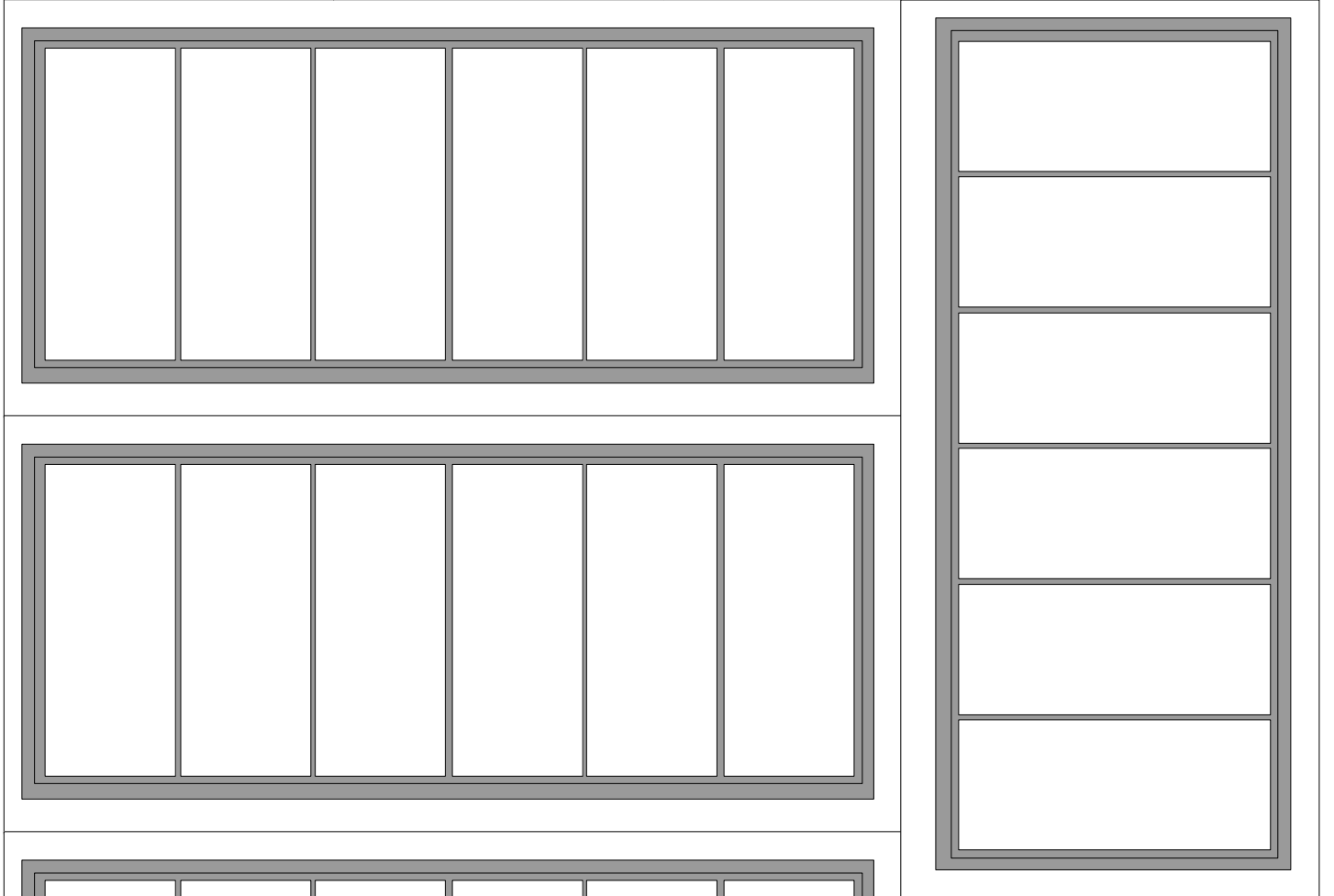
Diesen Rand nicht umknicken ! Hier wird später das Dachteil C angeklebt



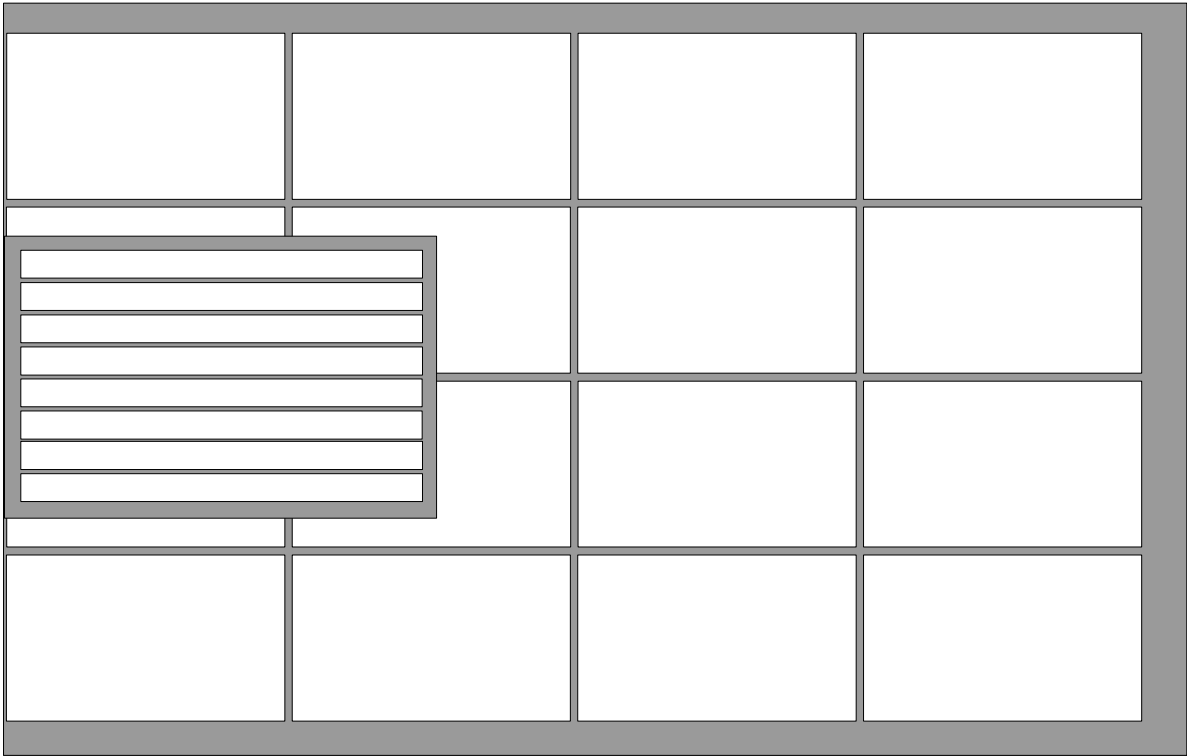


2 Fenster für Teil A1 (oben)

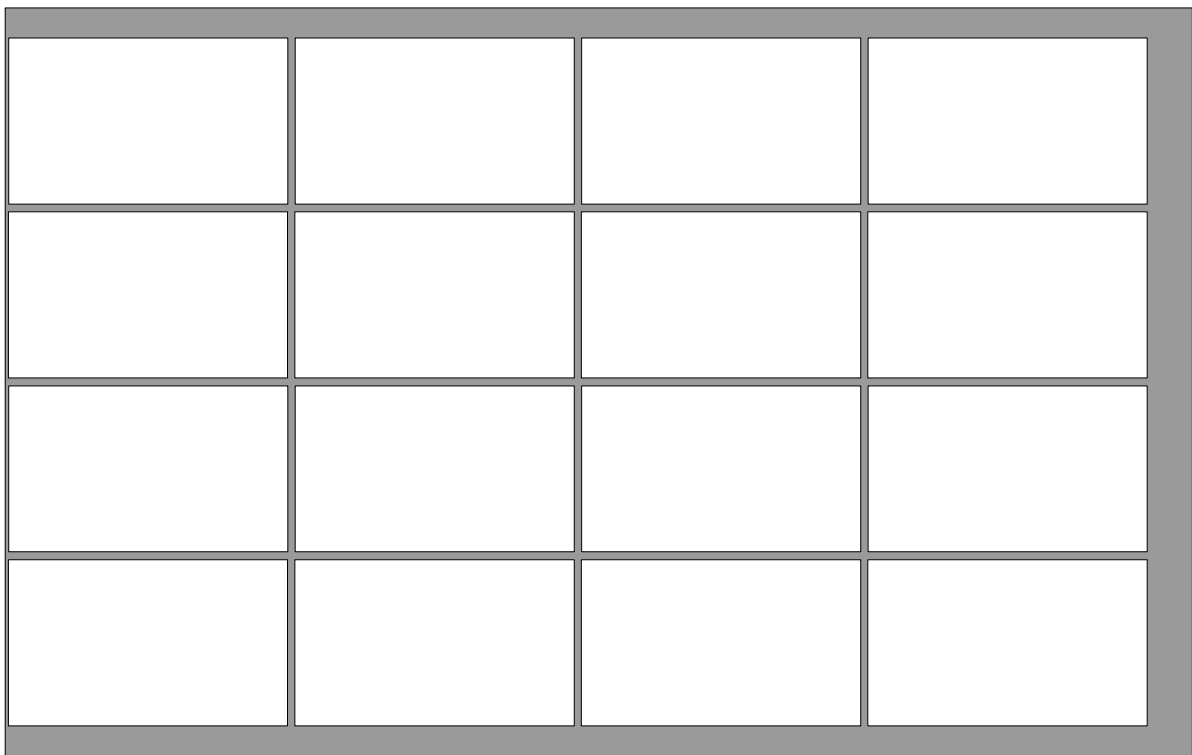
3 Fenster für Teil A2 bis A4 (links)

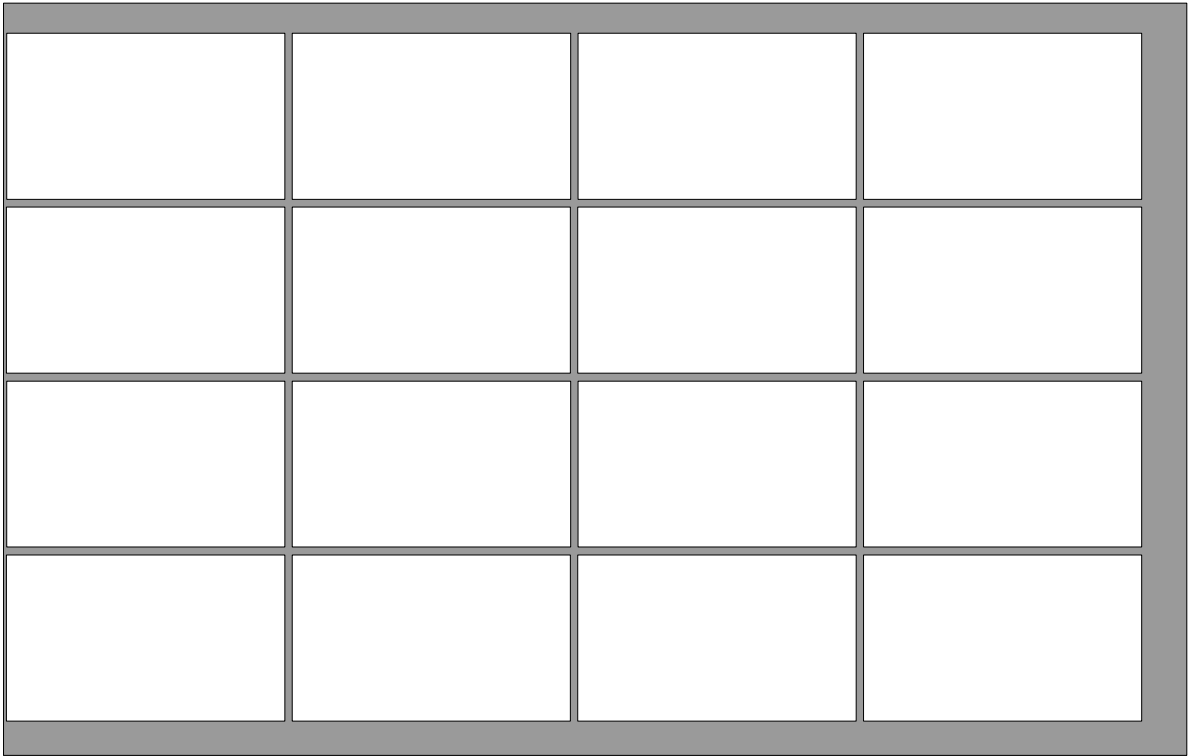


4 Fenster für Teil B (oben und links)

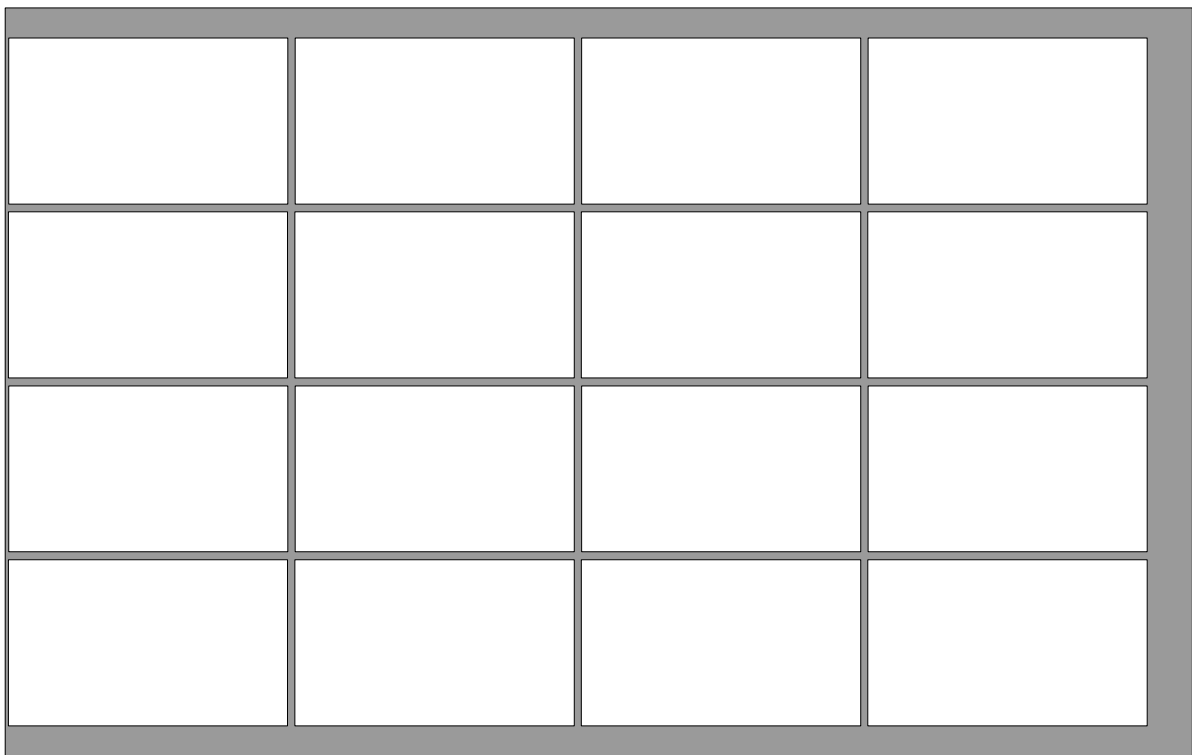


2 Fenster für Teil C3 und C4  
( 1 mal auf Folie ausdrucken )

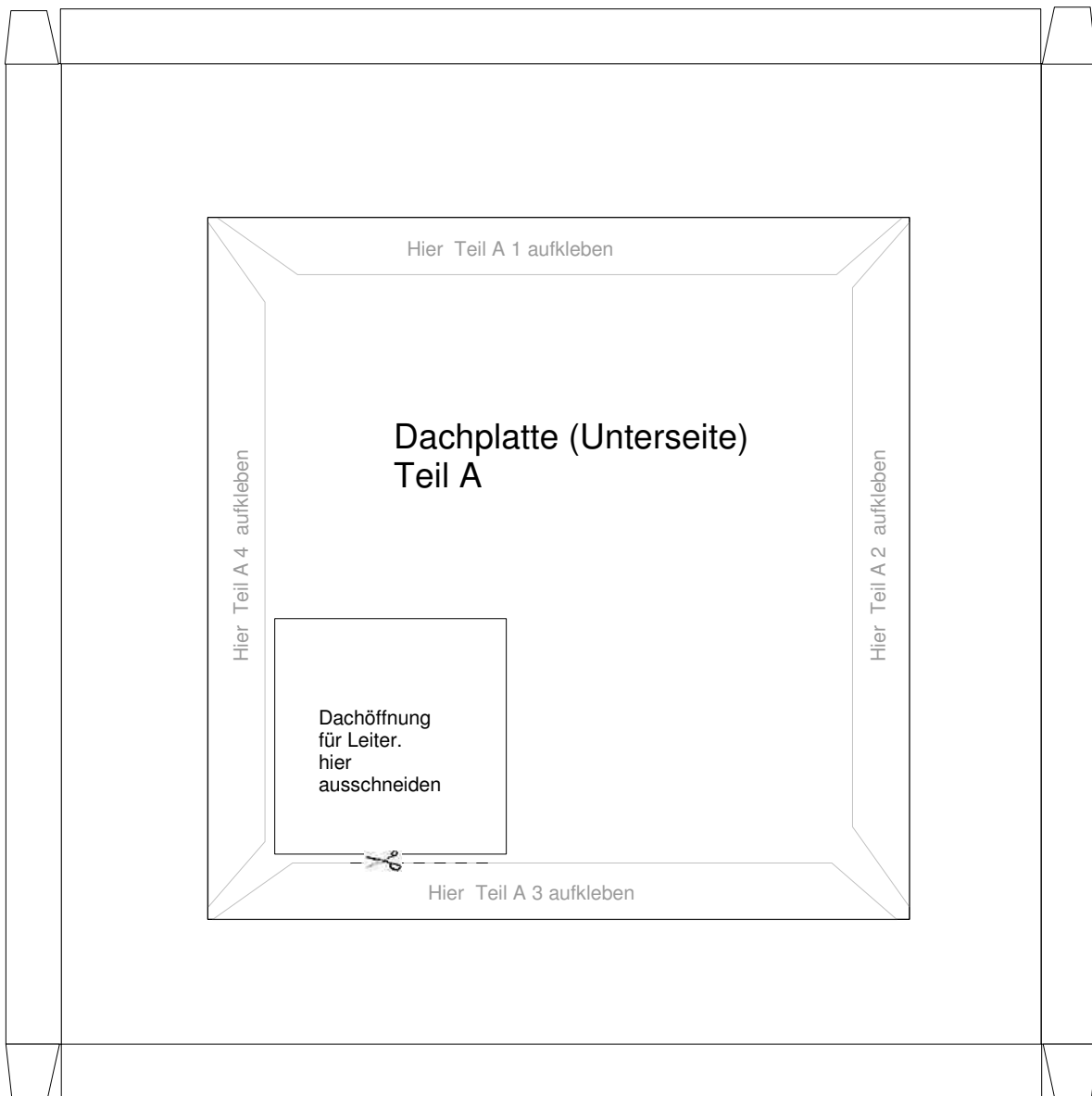
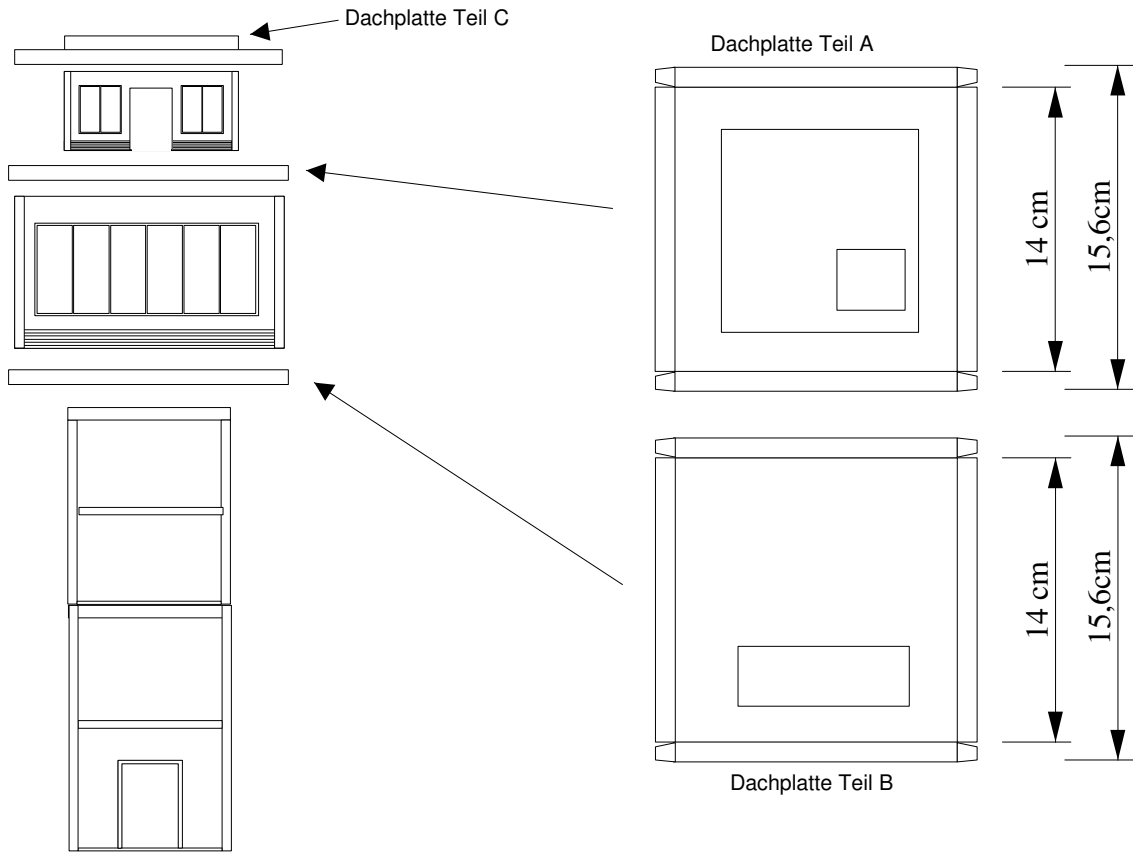




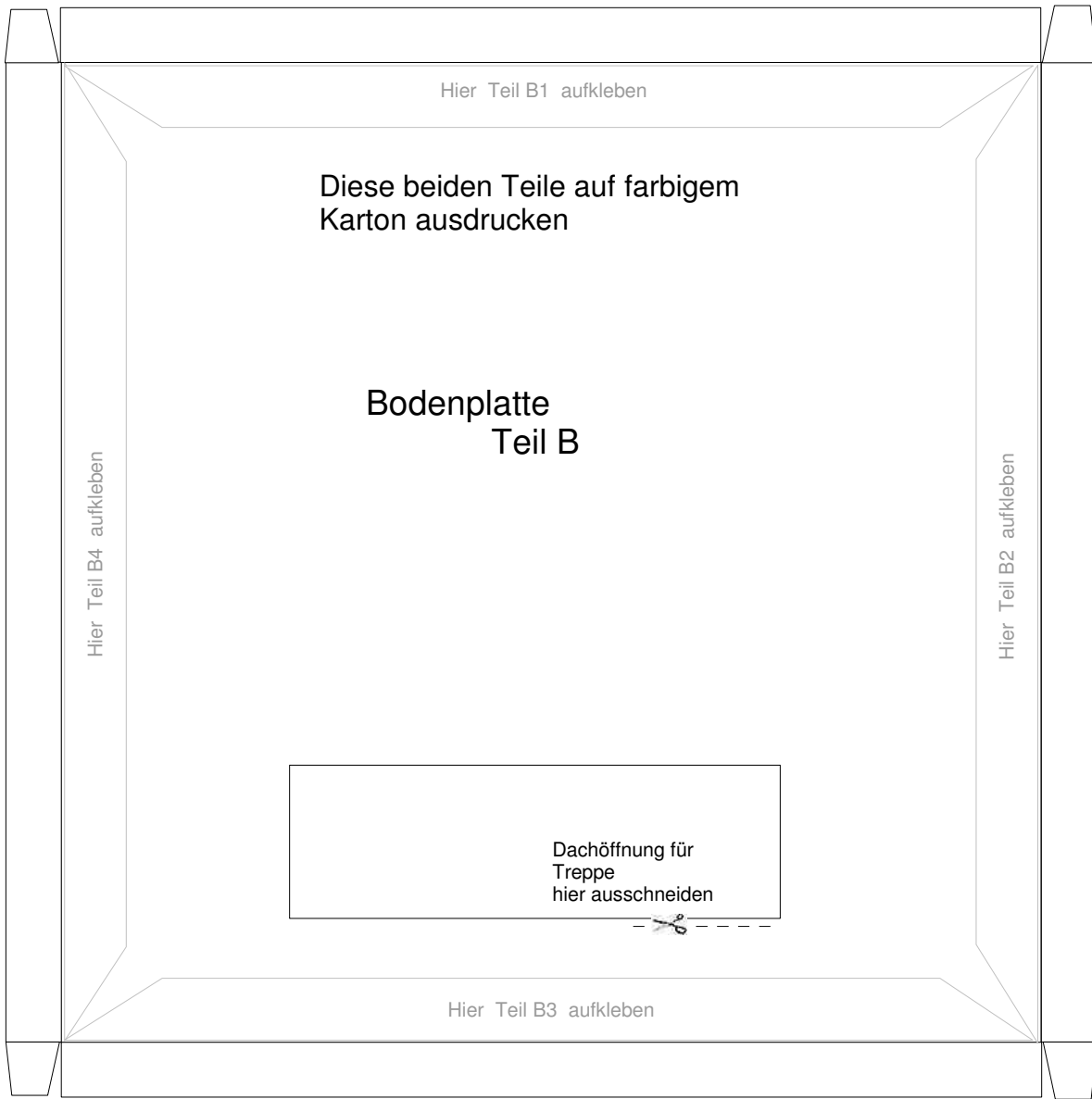
2 Fenster für Teil C1 (oben) und C2 (unten)  
( 1 mal auf Folie ausdrucken )







Diese beiden Teile auf farbigem  
Karton ausdrucken





Diese beiden Teile auf farbigem  
Karton ausdrucken

