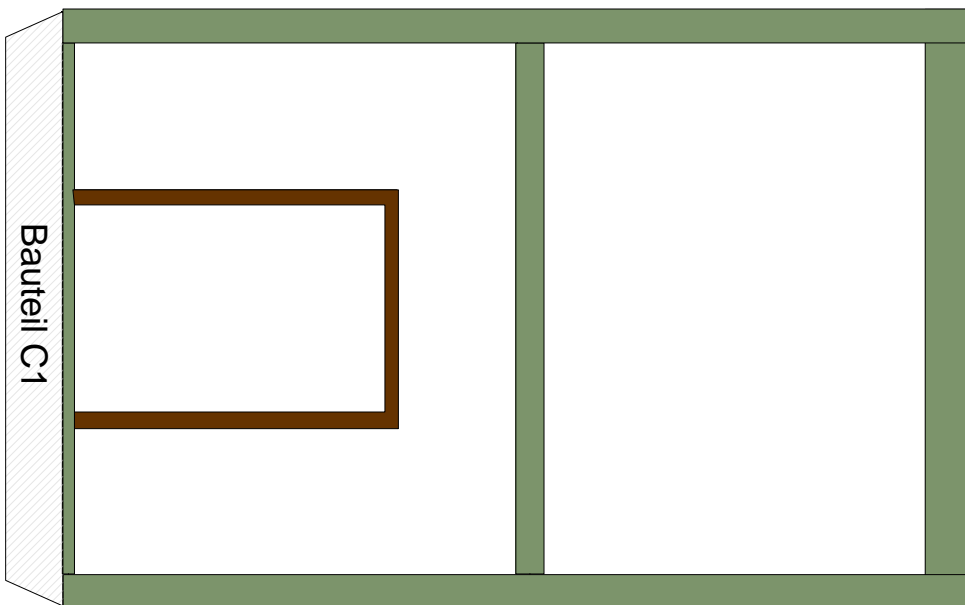
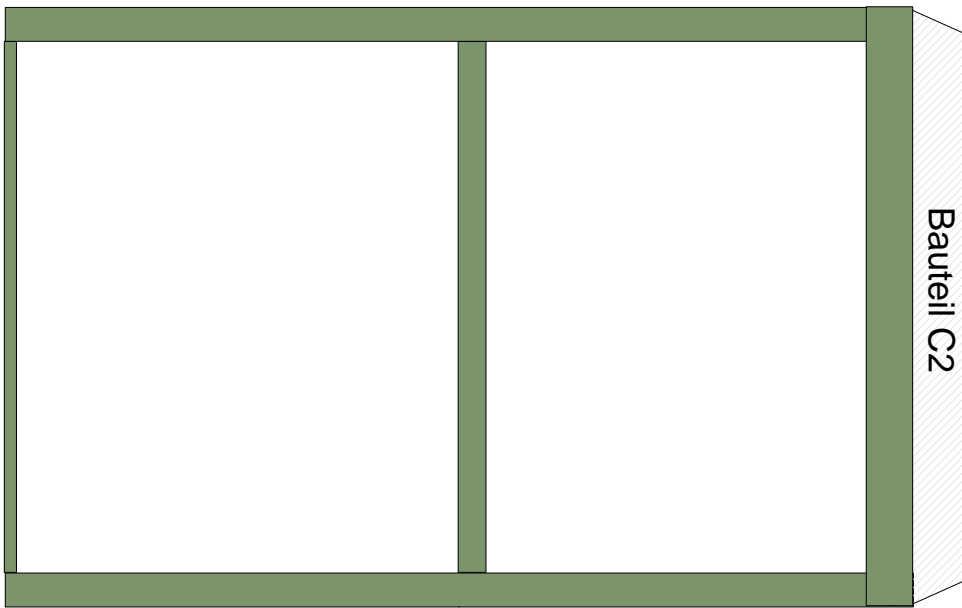
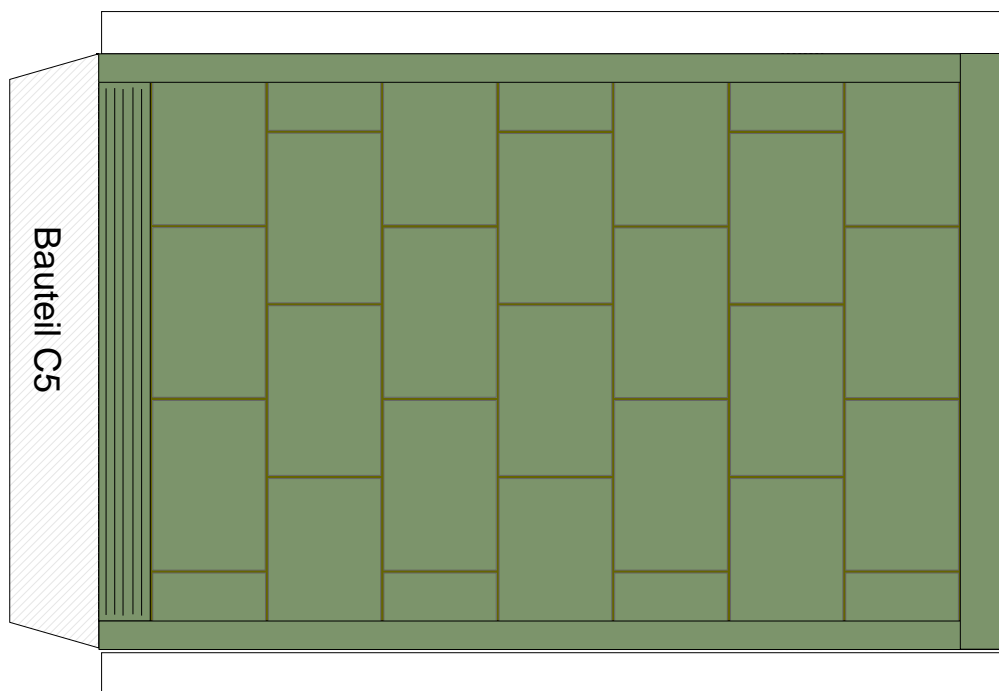
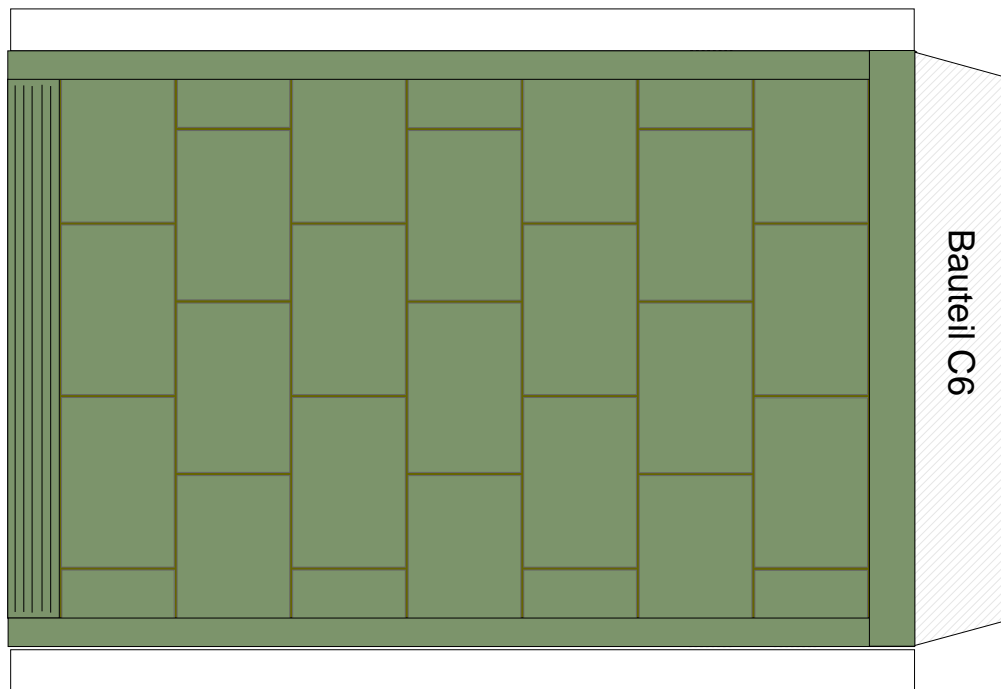


Dieses Blatt 1 mal ausdrucken ( Fensterwand Frontseite )

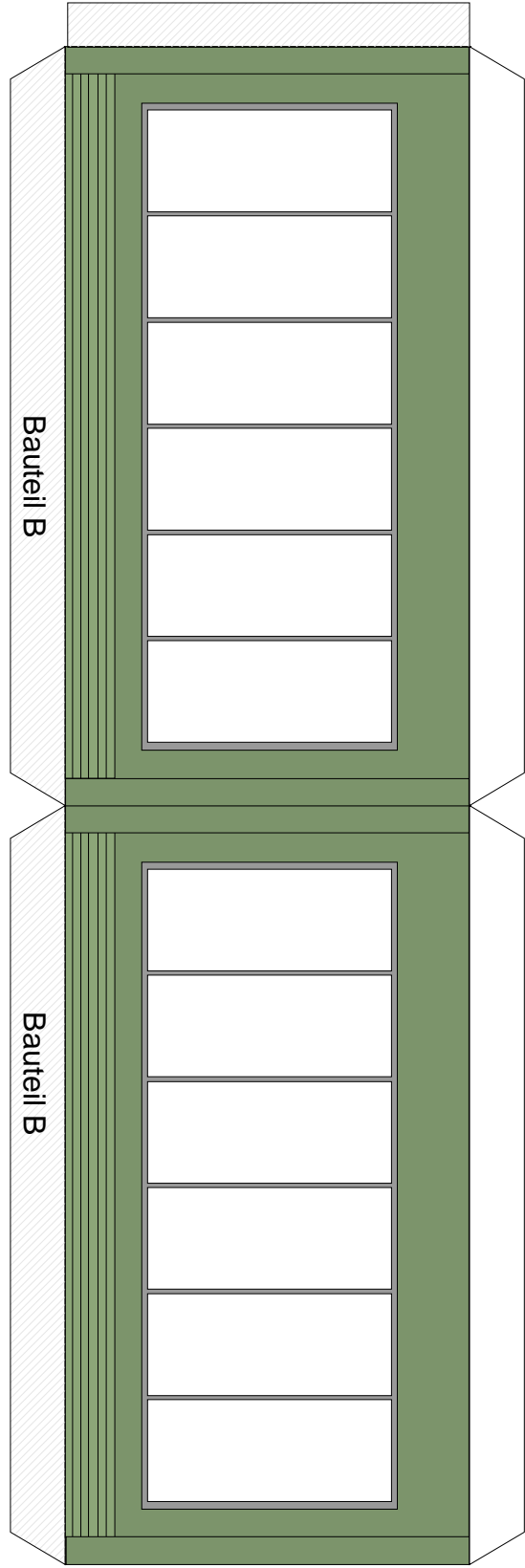
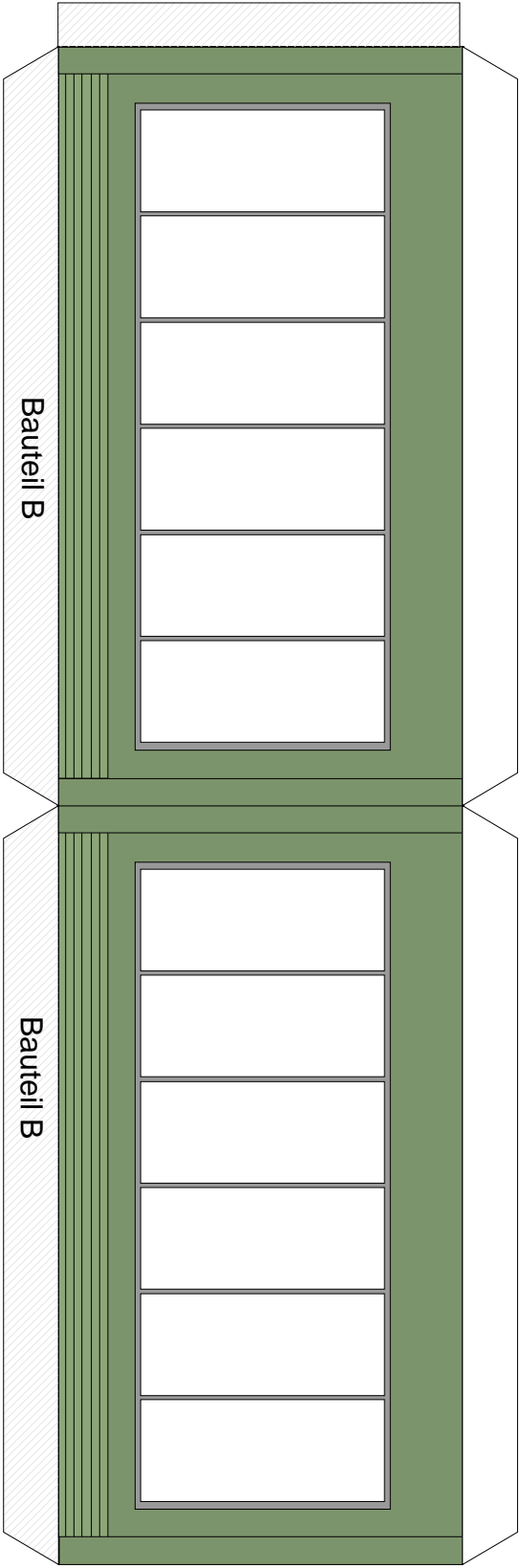


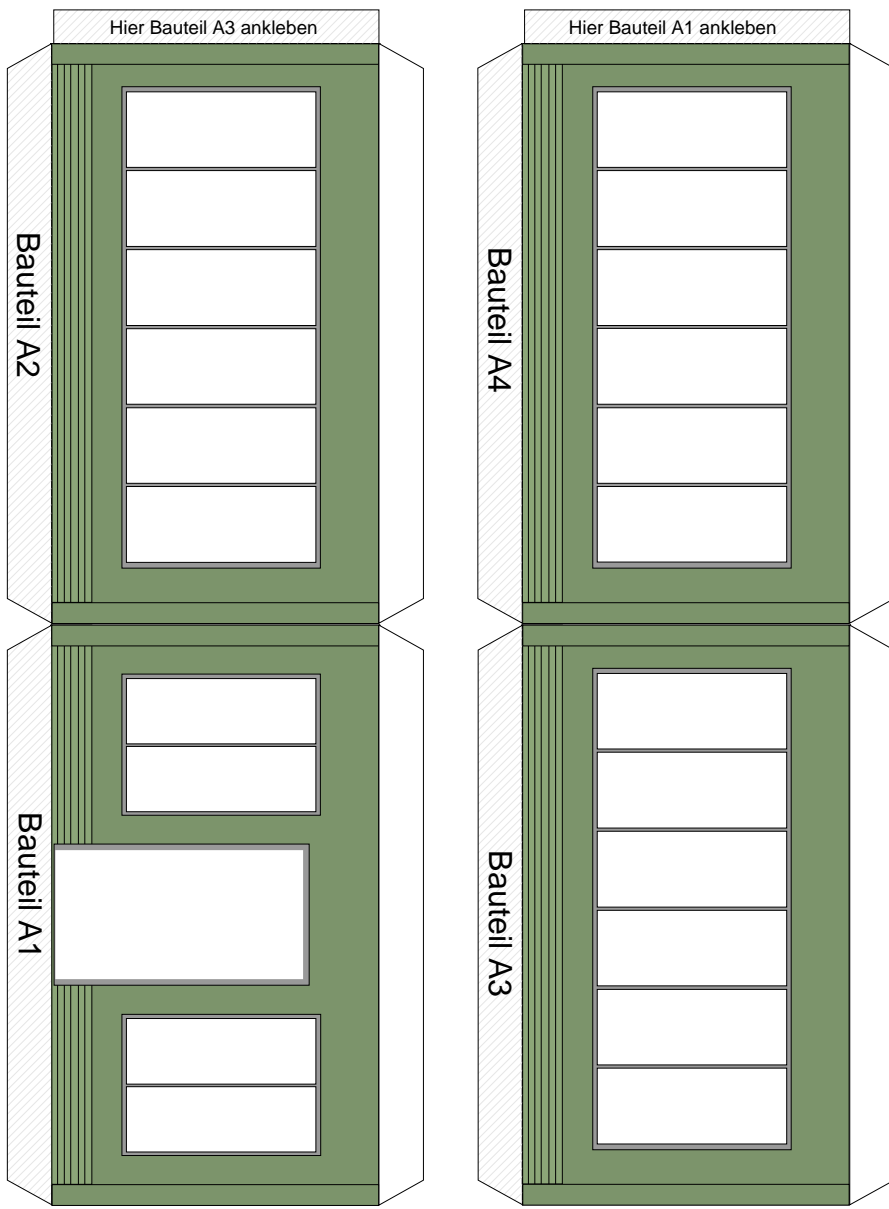
Dieses Blatt 2 mal ausdrucken (für Seitenwand links bzw. Seitenwand rechts)



[www.carrera4fun.de](http://www.carrera4fun.de)

Alle Rechte bei F.Rehberg © 2003



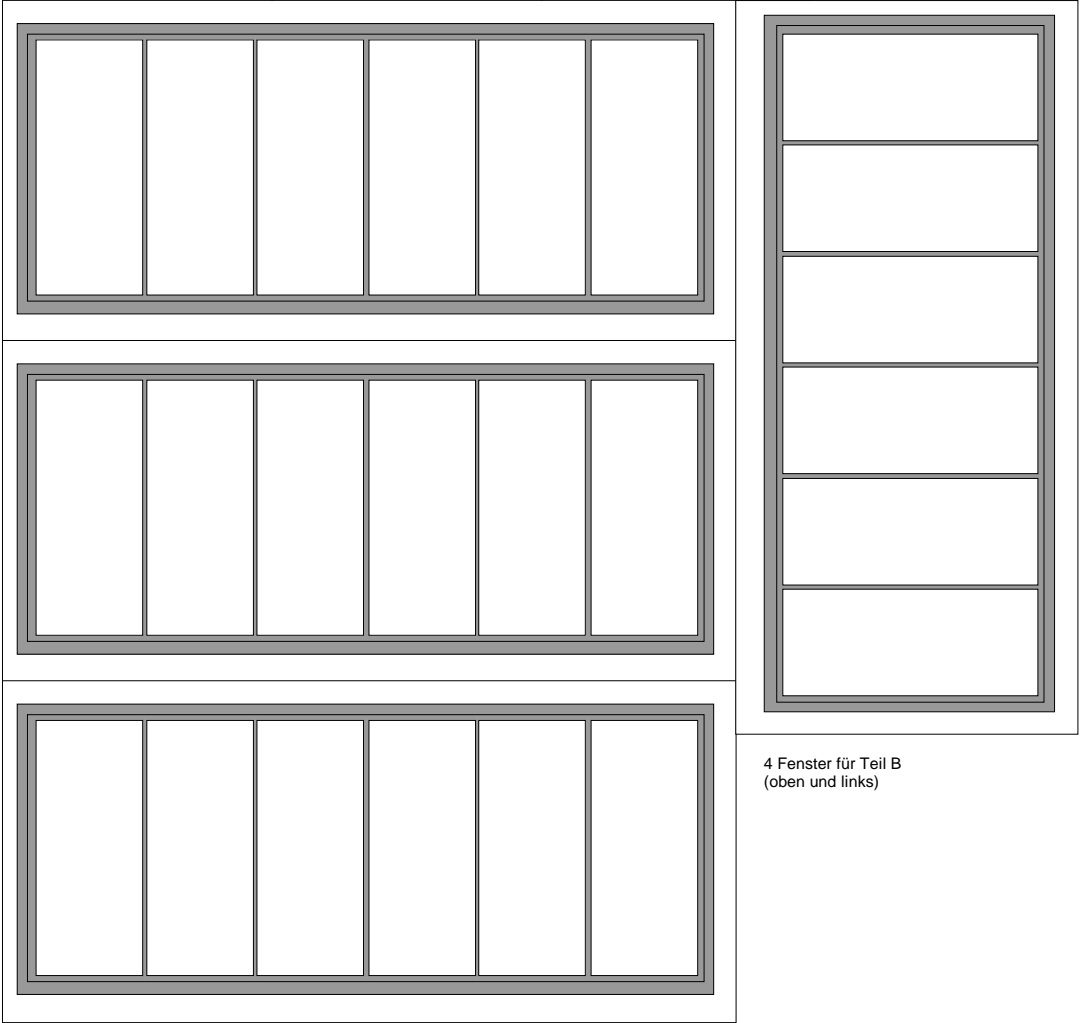
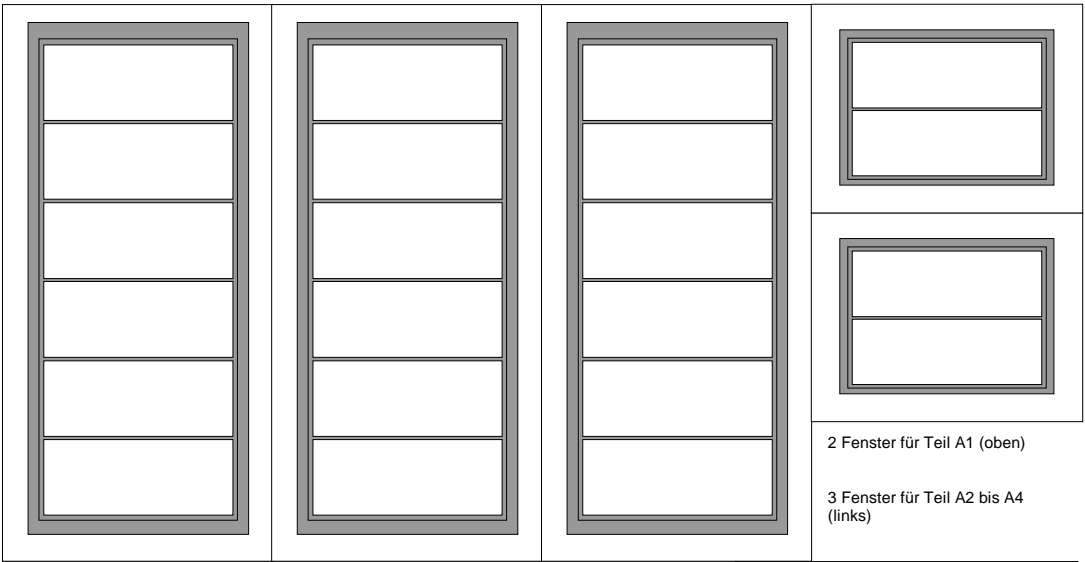


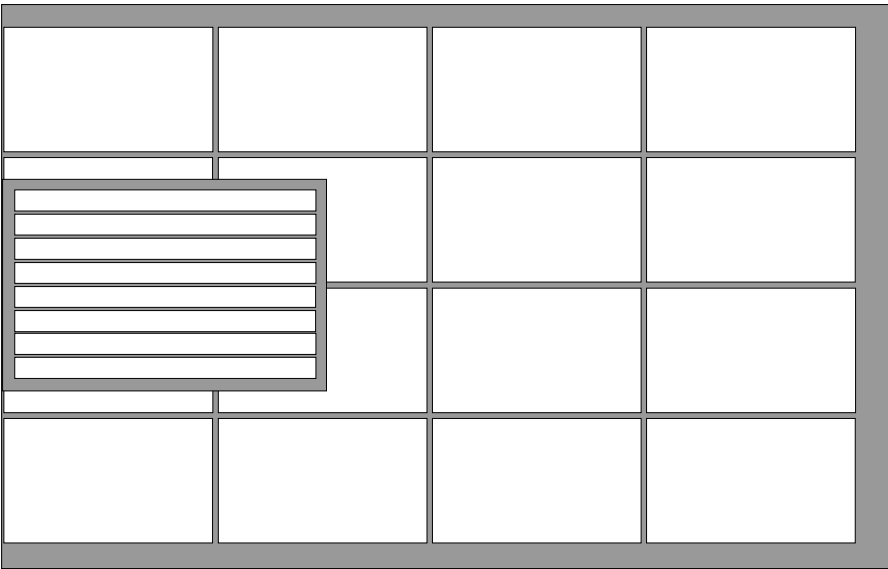
Diesen Rand nicht umknicken ! Hier wird später  
das Dachteil C angeklebt



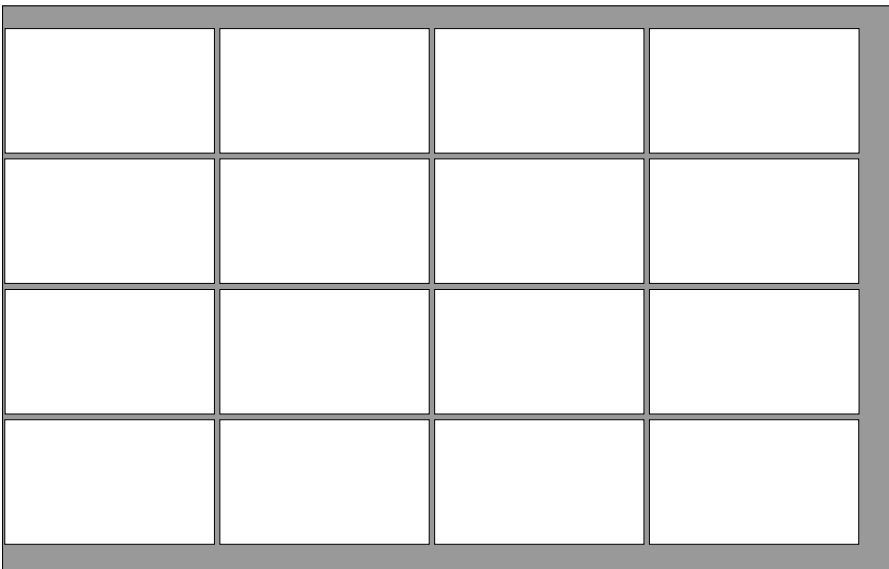
[www.carrera4fun.de](http://www.carrera4fun.de)

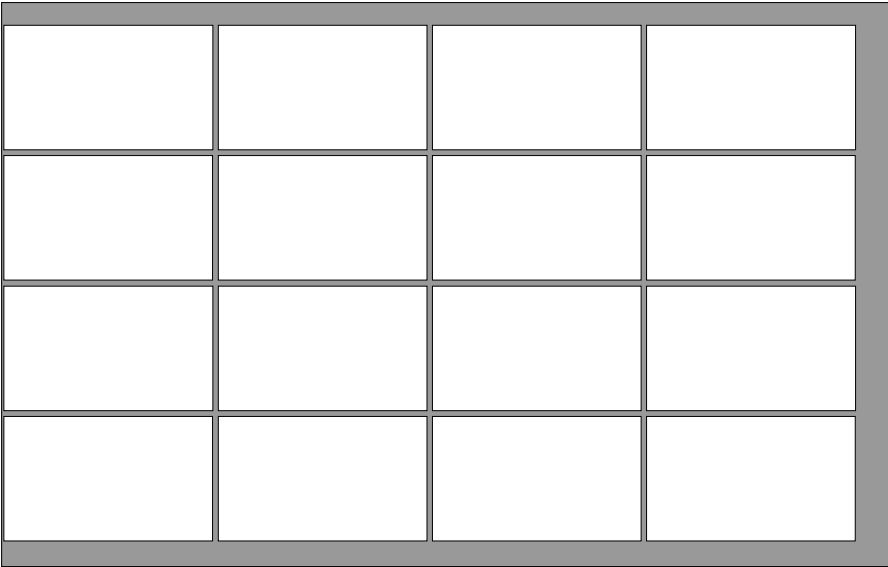
Alle Rechte bei F.Rehberg © 2003



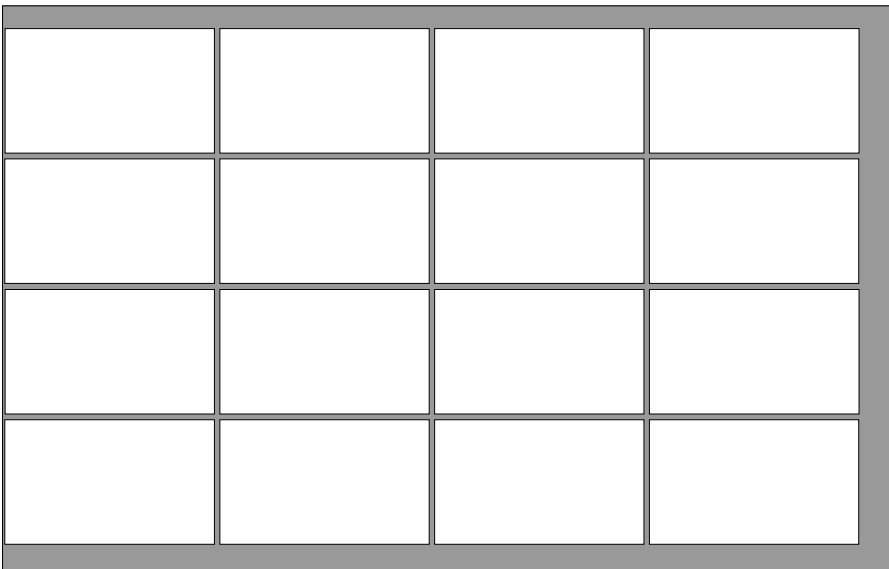


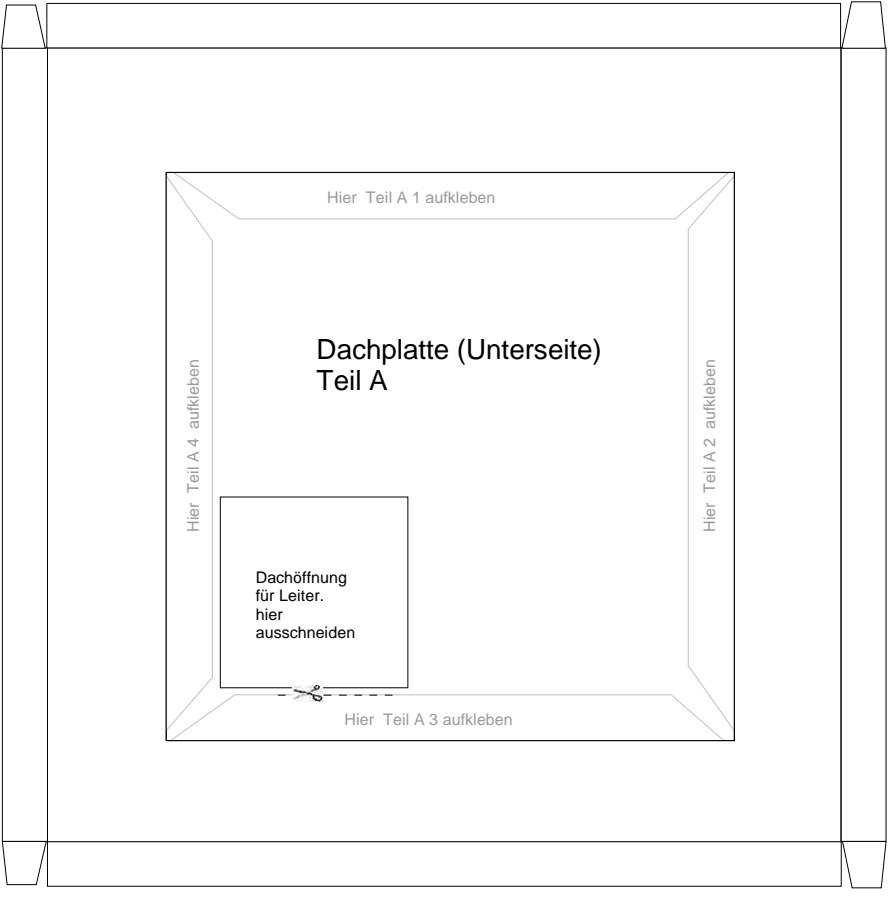
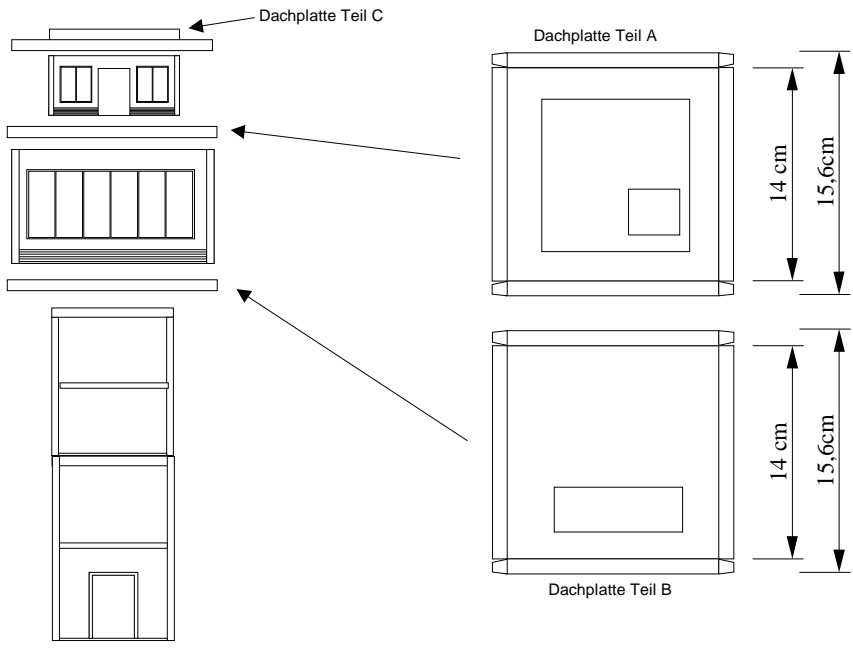
2 Fenster für Teil C3 und C4  
( 1 mal auf Folie ausdrucken )





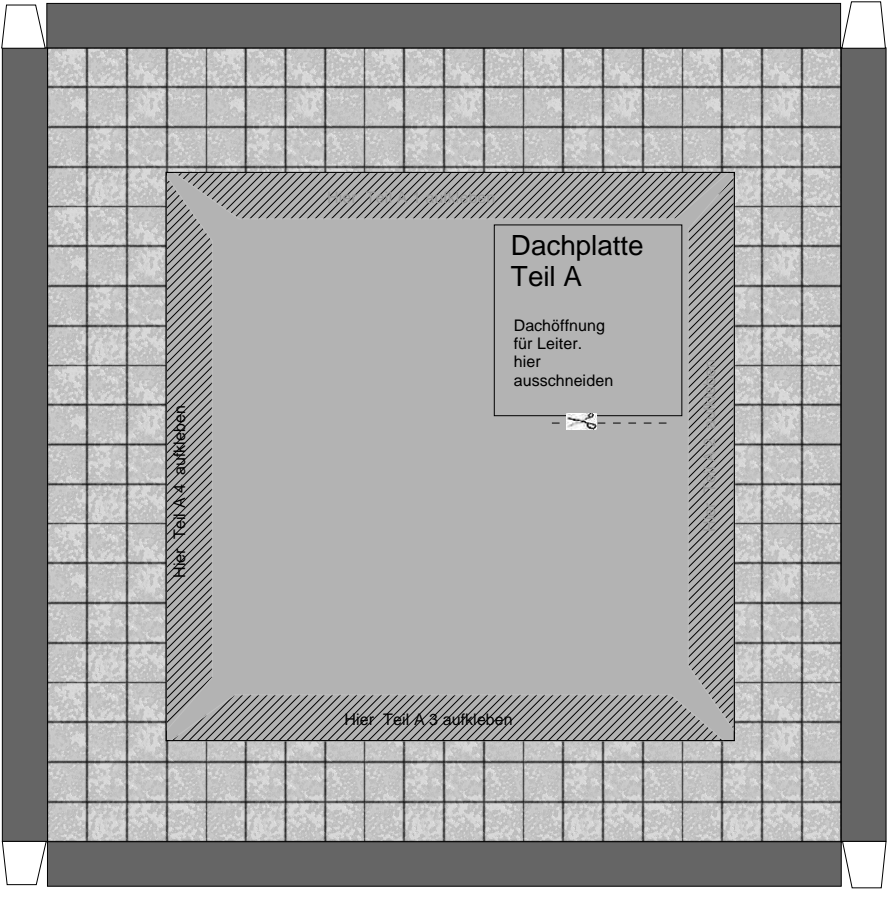
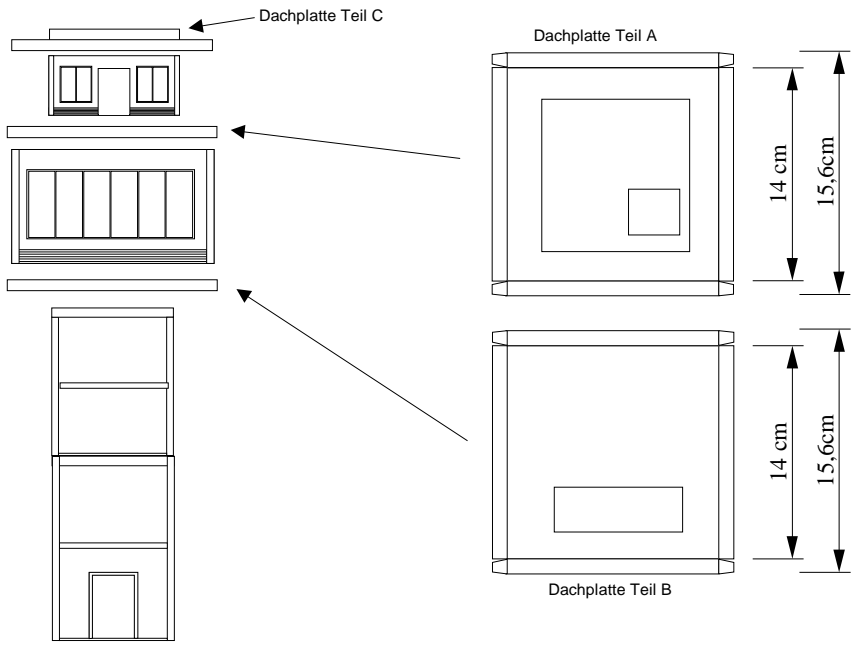
2 Fenster für Teil C1 (oben) und C2 (unten)  
( 1 mal auf Folie ausdrucken )

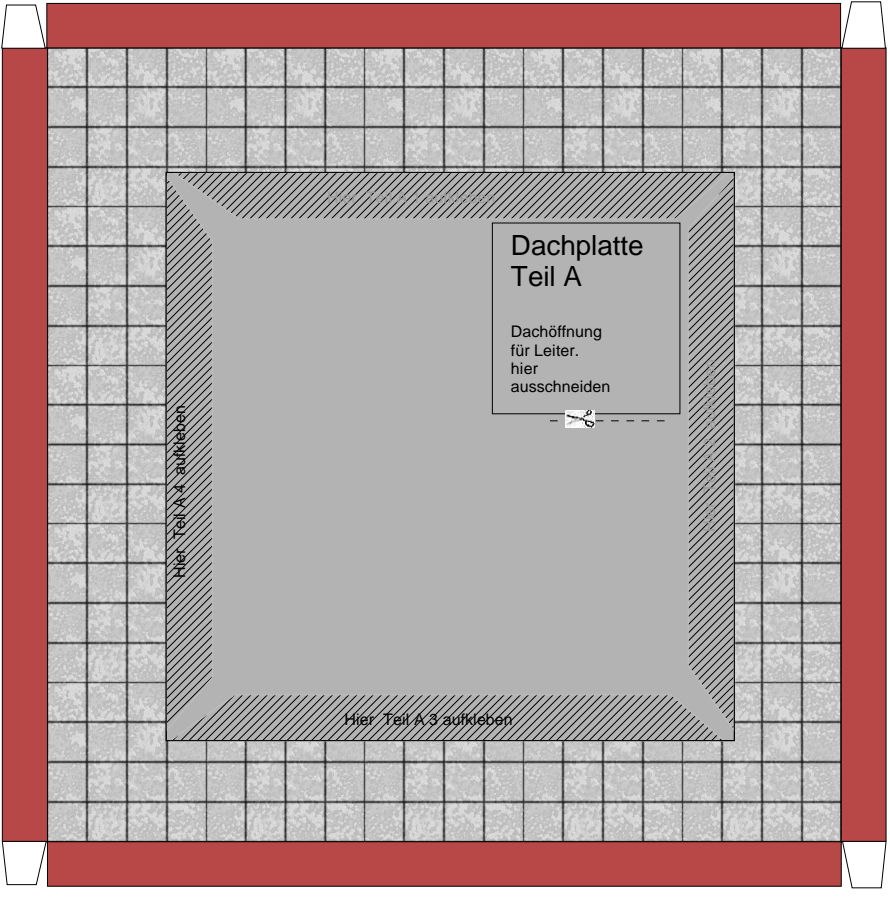
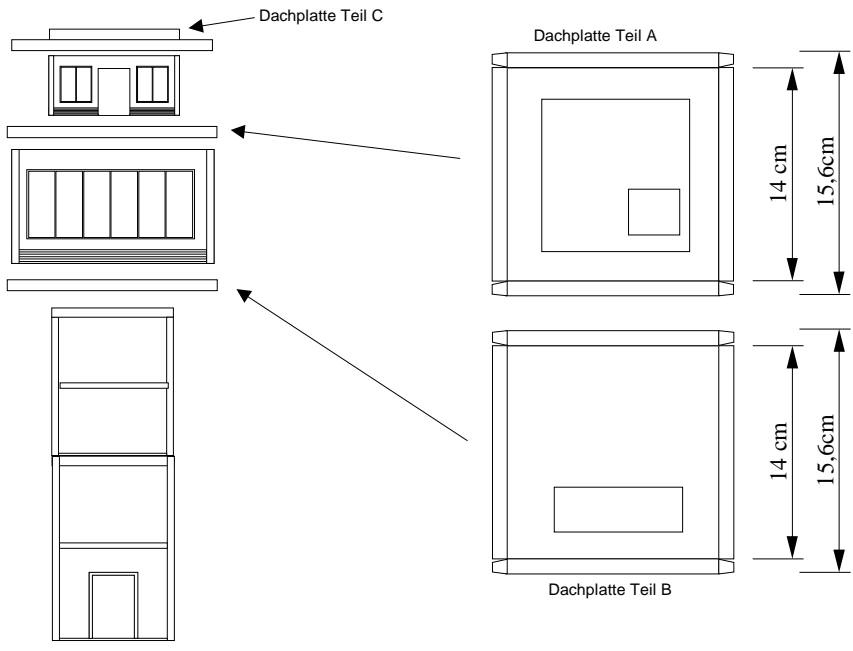


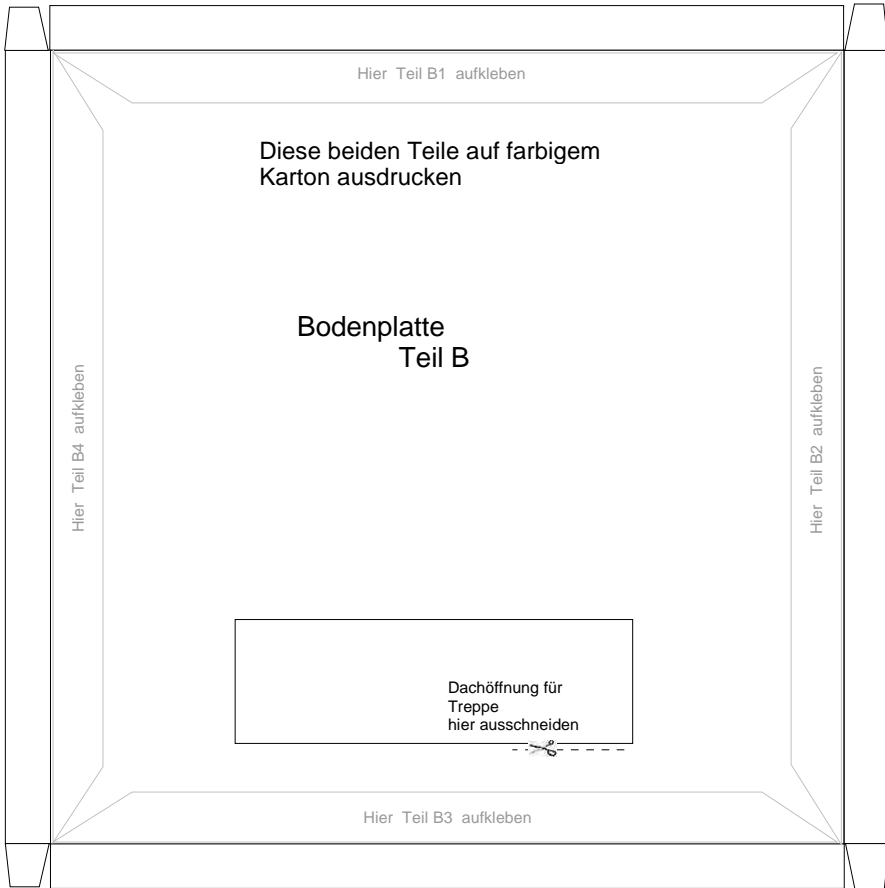


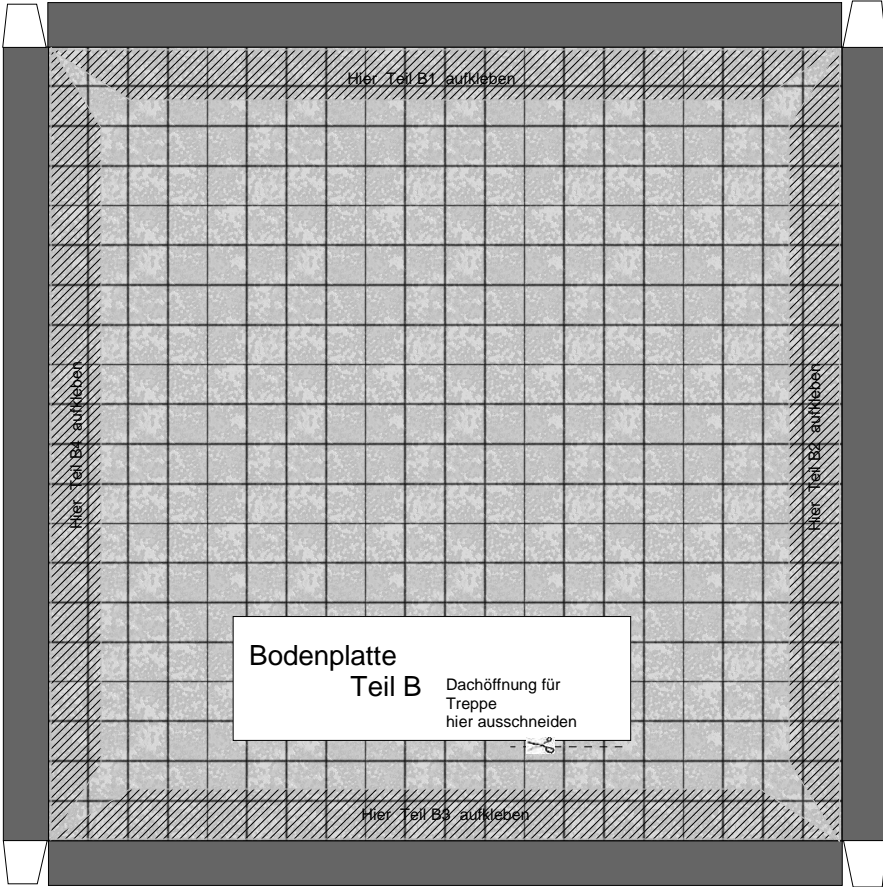
Diese beiden Teile auf farbigem  
Karton ausdrucken

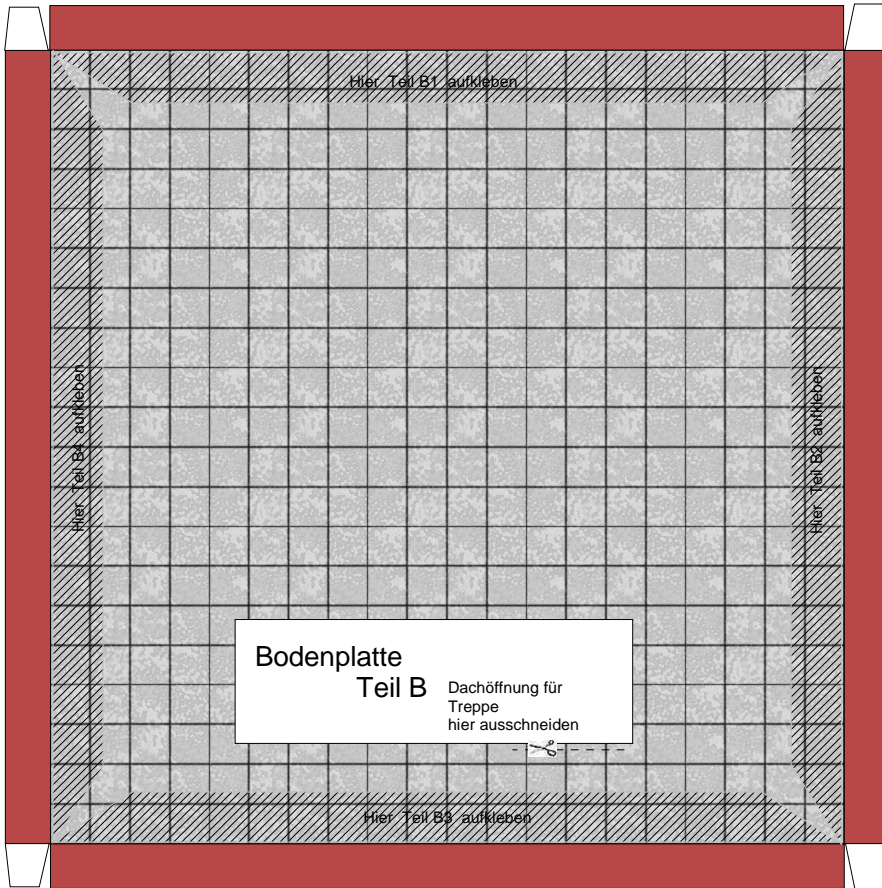


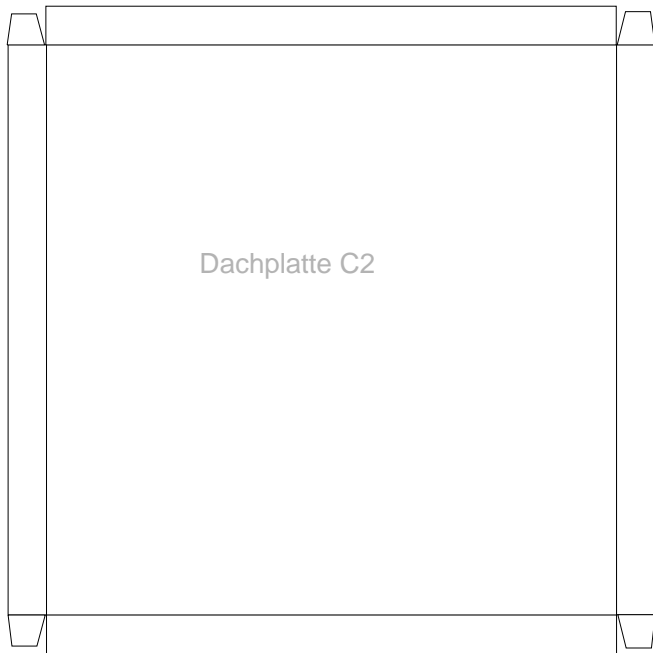
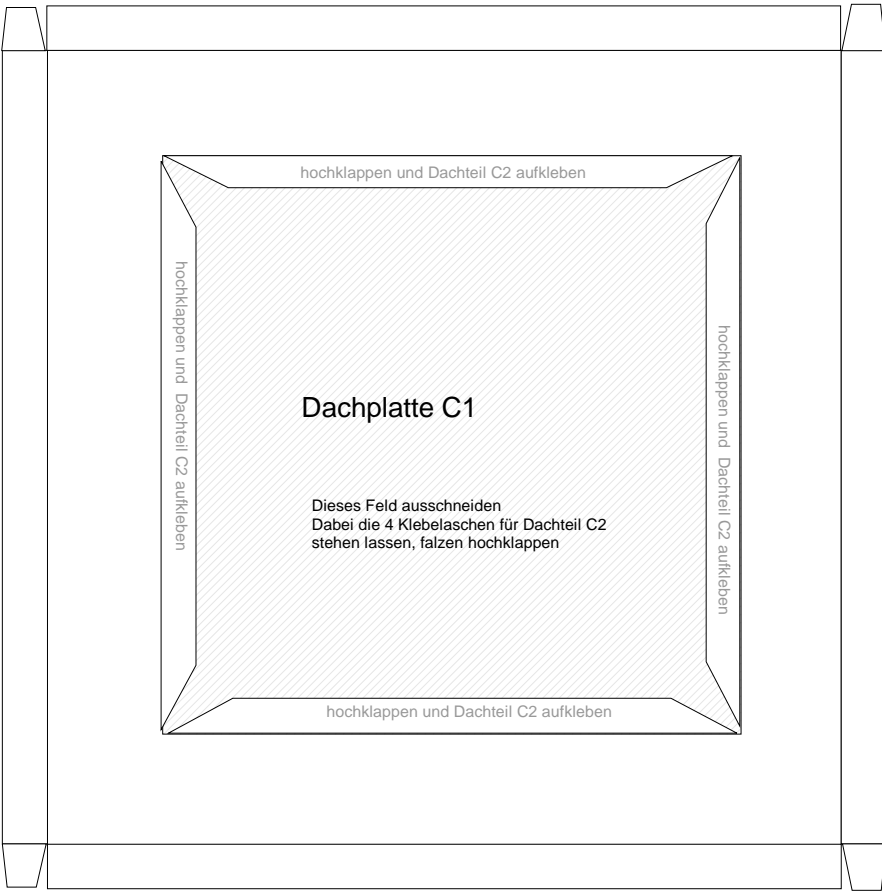




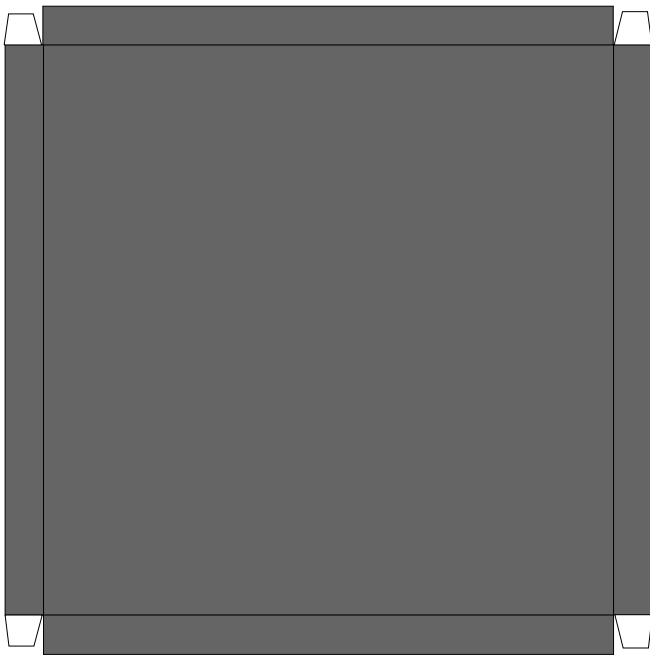
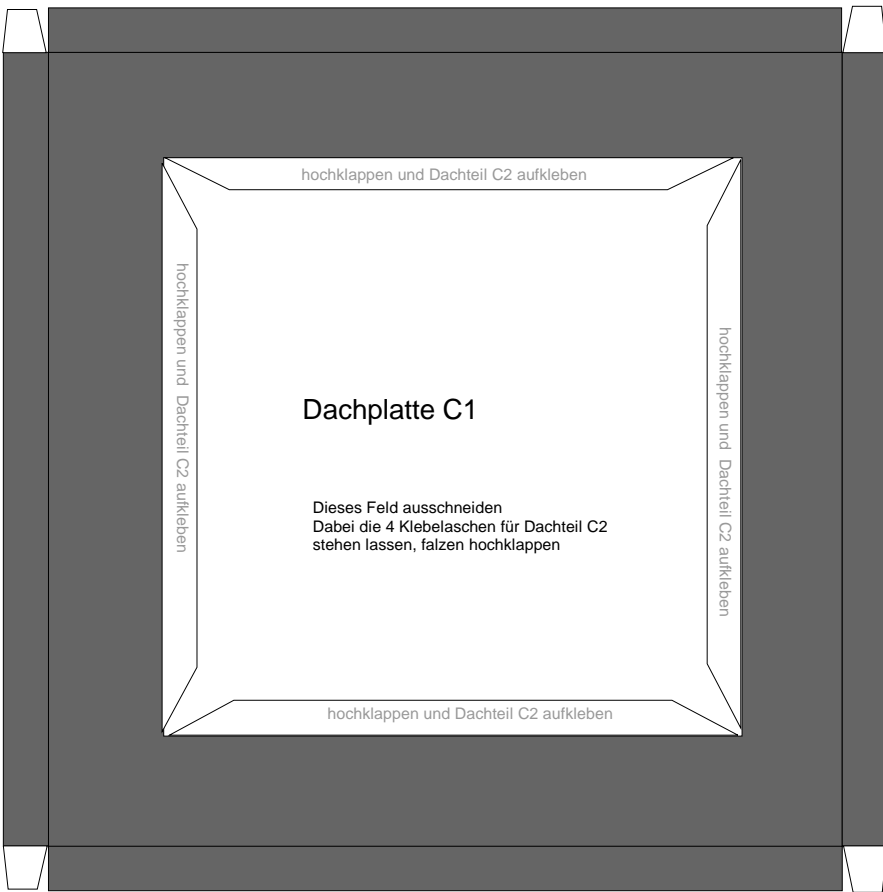




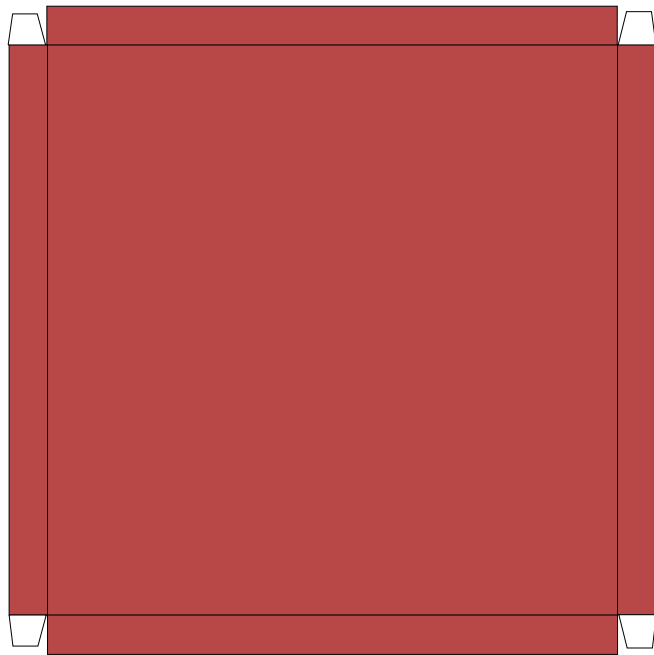
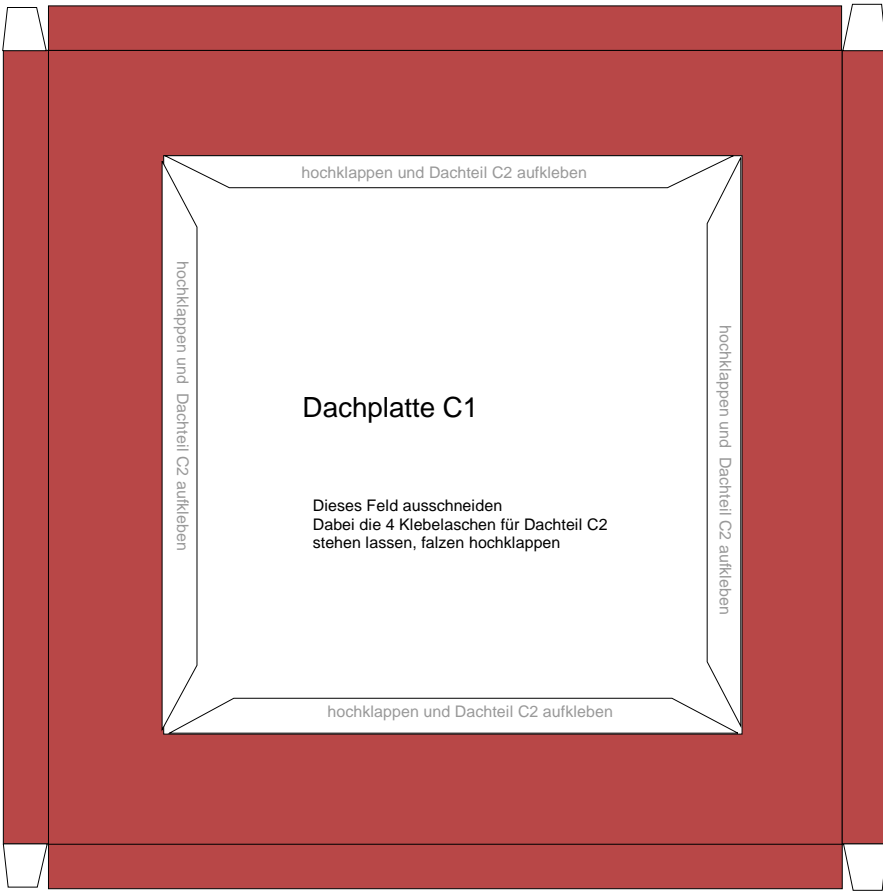




Diese beiden Teile auf farbigem  
Karton ausdrucken

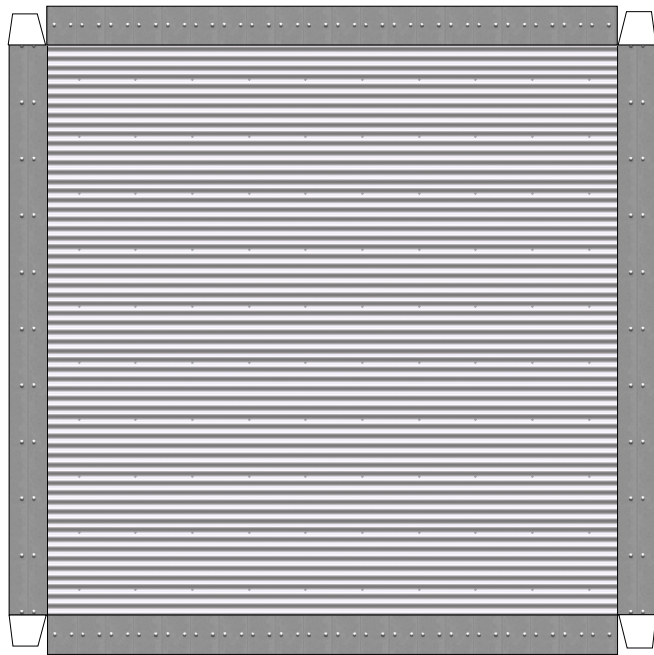
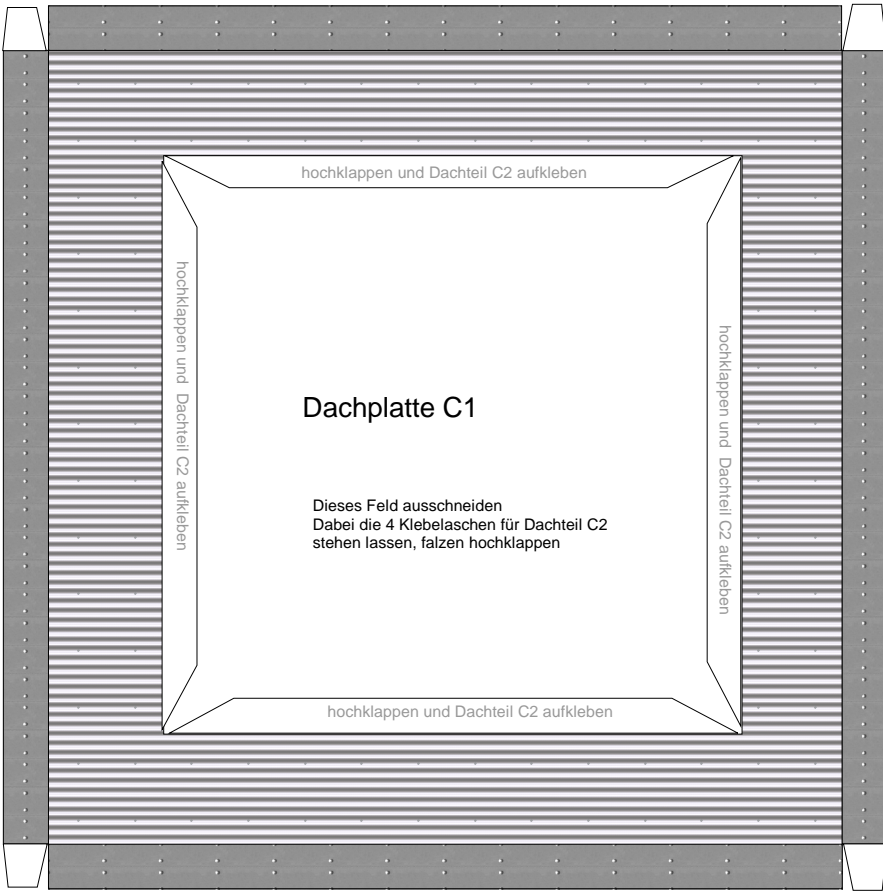


Dachplatte C2

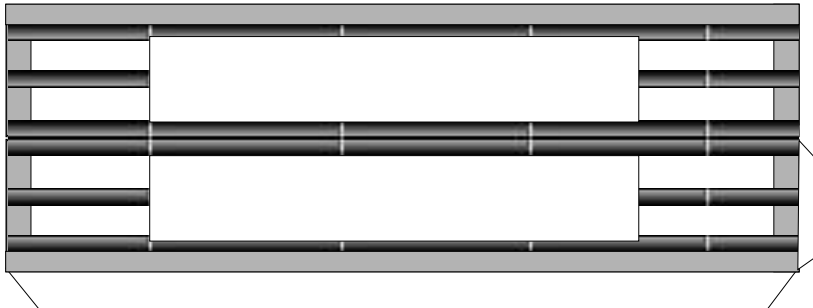
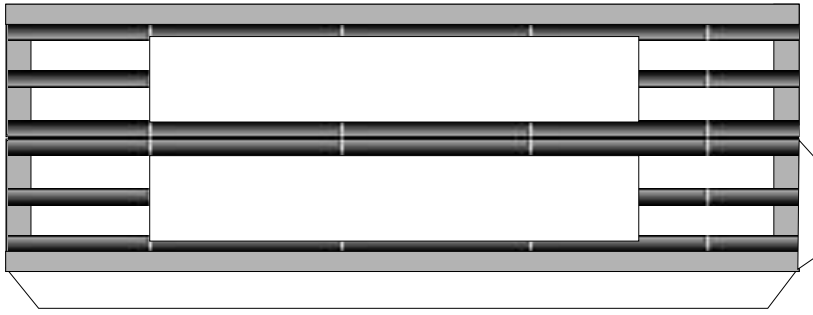


Dachplatte C2

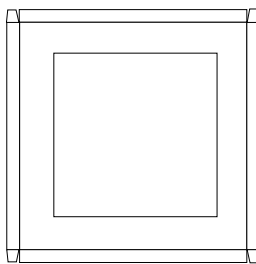




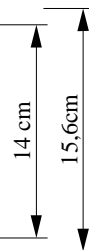
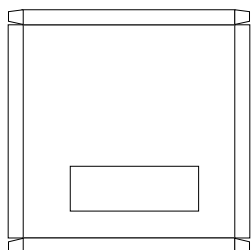
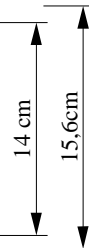
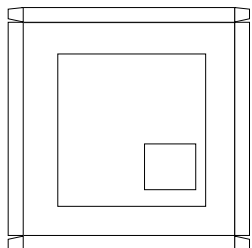
Dachplatte C2



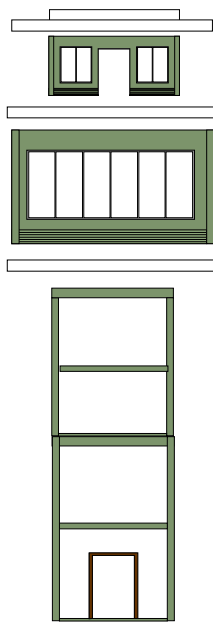
Dachplatte Teil C



Dachplatte Teil A



Dachplatte Teil B



A1 - A4

B1 - B4

C1 - C6

